



Online Trading Platform User Guide





This guide aims to help you understand and operate your DBS Vickers online trading account with visual illustrations. It will help to exemplify and address some common user experience issues. We hope that with this guide, you will be able to navigate the DBS Vickers online trading platform with ease.

Things to note




You will require a 2nd Factor Authentication (2FA) to log in to DBS Vickers online trading platform.

This is a One-Time PIN (OTP) which can be obtained via a secure device or SMS.



Update your mobile number via DBS Vickers online trading platform under

"My Profile"  *"Update Personal Details"* page to receive the SMS OTP.



If you are using DBS iBanking secure device and your mobile number is updated with DBS but not with DBS Vickers, you will be required to register / update your mobile number with DBS Vickers to receive the SMS OTP.

Table of Content

How to Log In ————— **Page 5 - Page 7**

Homepage ————— **Page 8 - Page 9**

Trade ————— **Page 10 - Page 19**

- ▶ Place Order
- ▶ Order Status
- ▶ Watchlist
- ▶ Advanced Market Data
- ▶ Transaction Screener
- ▶ Commission Calculator

Markets ————— **Page 20 - Page 31**

- ▶ News
- ▶ Insights
- ▶ Reports
- ▶ Stock Screener
- ▶ Stock Search
- ▶ Stock Comparer
- ▶ Charting
- ▶ Market Overview

My Account ————— **Page 32 - Page 39**

- ▶ Balances
- ▶ Holdings
- ▶ Outstanding Contracts
- ▶ Custom Portfolio
- ▶ History
- ▶ eStatements
- ▶ Account Management

IPO ————— **Page 40**

Resources ————— **Page 41**

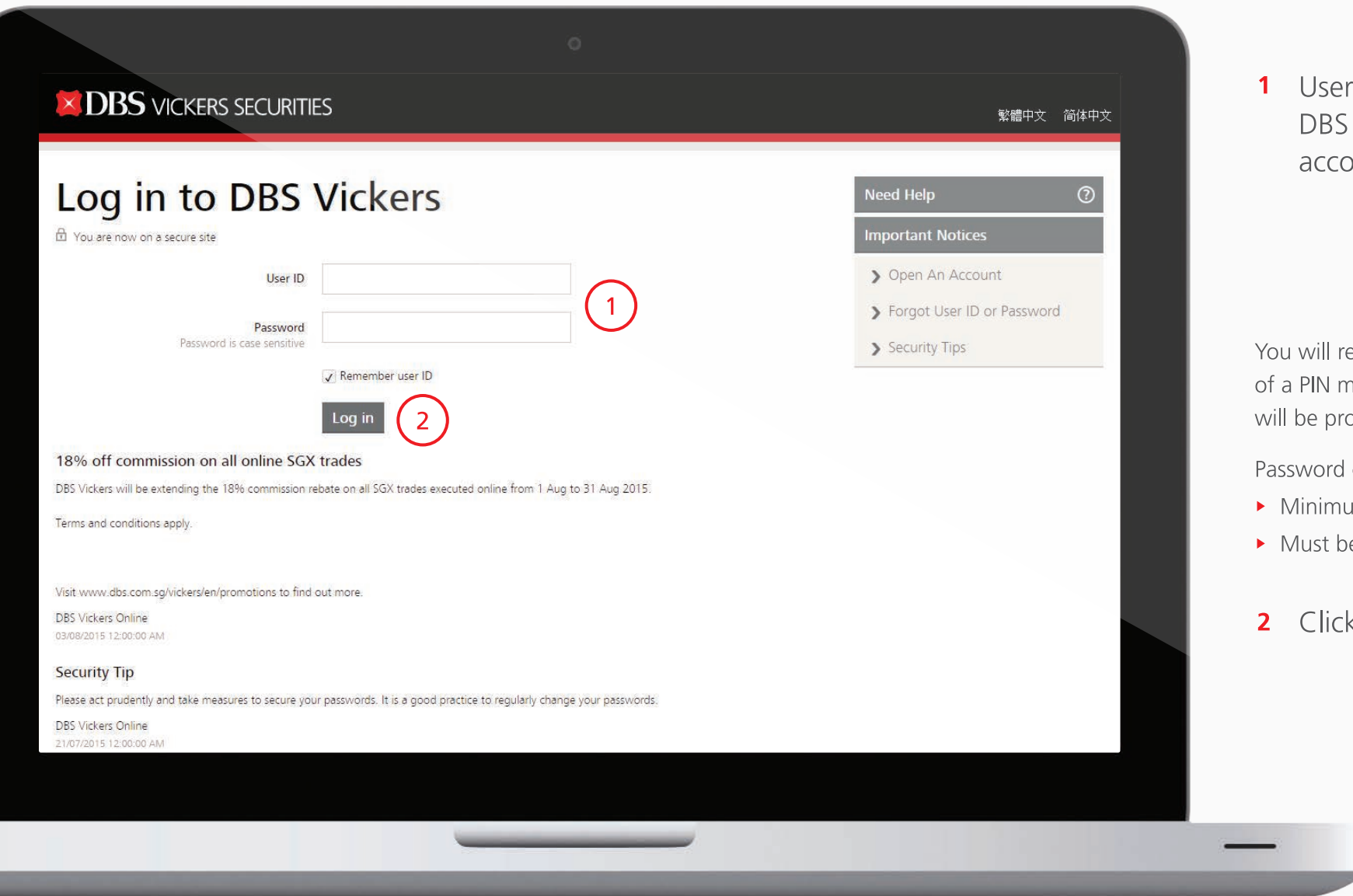
My Profile ————— **Page 42 - Page 47**

- ▶ Change Password
- ▶ Update Personal Details
- ▶ Set Alerts
- ▶ Customise Site
- ▶ Enrol for eStatement
- ▶ 2FA

Disclaimer ————— **Page 48**



- 1 Click on the login tab.
- 2 Check out our current promotions & seminars.



- 1 User ID is your 7-digit DBS Vickers online account number.

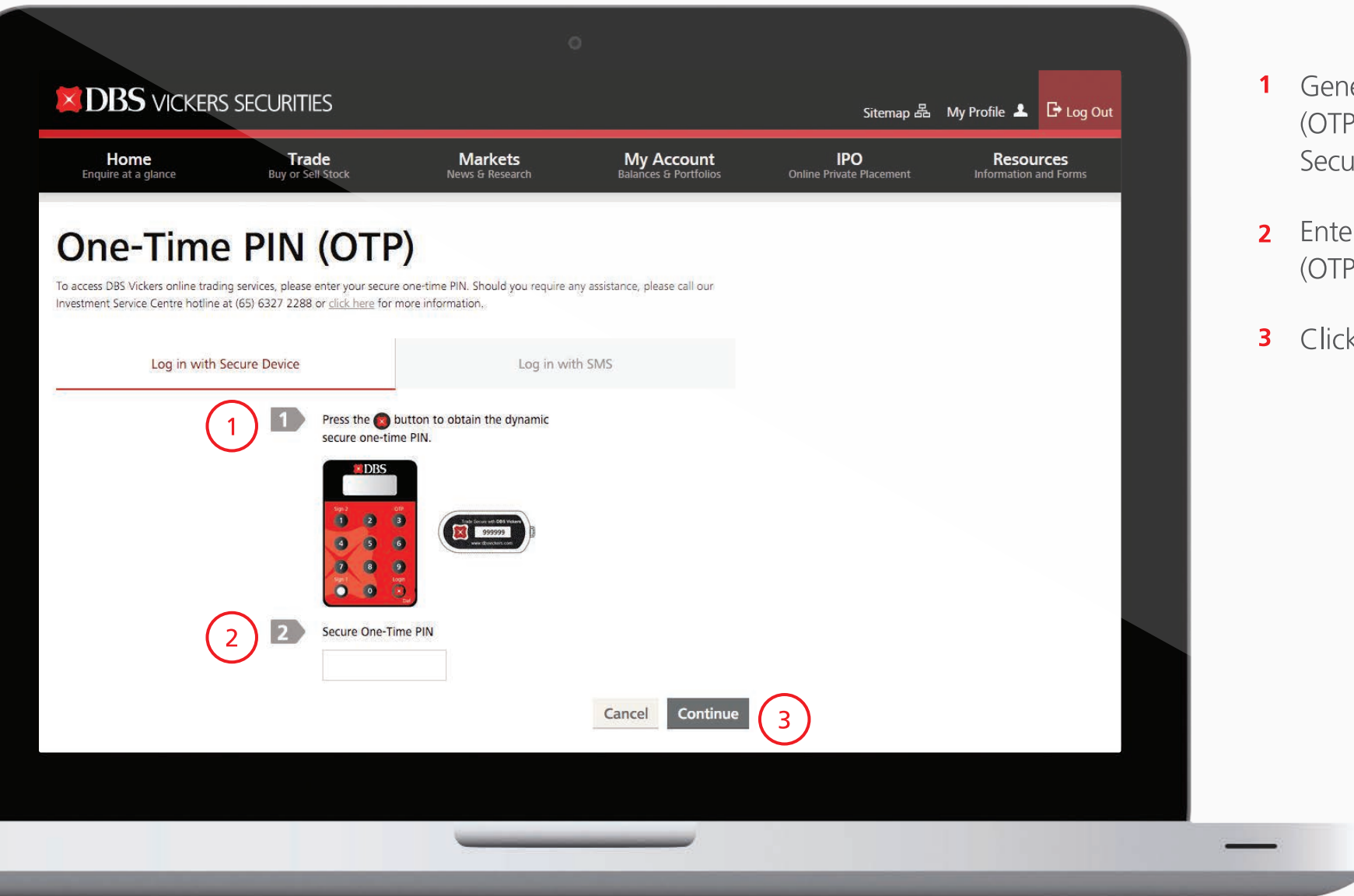


You will receive your password in the form of a PIN mailer. Upon the first log in, you will be prompted to change your password.

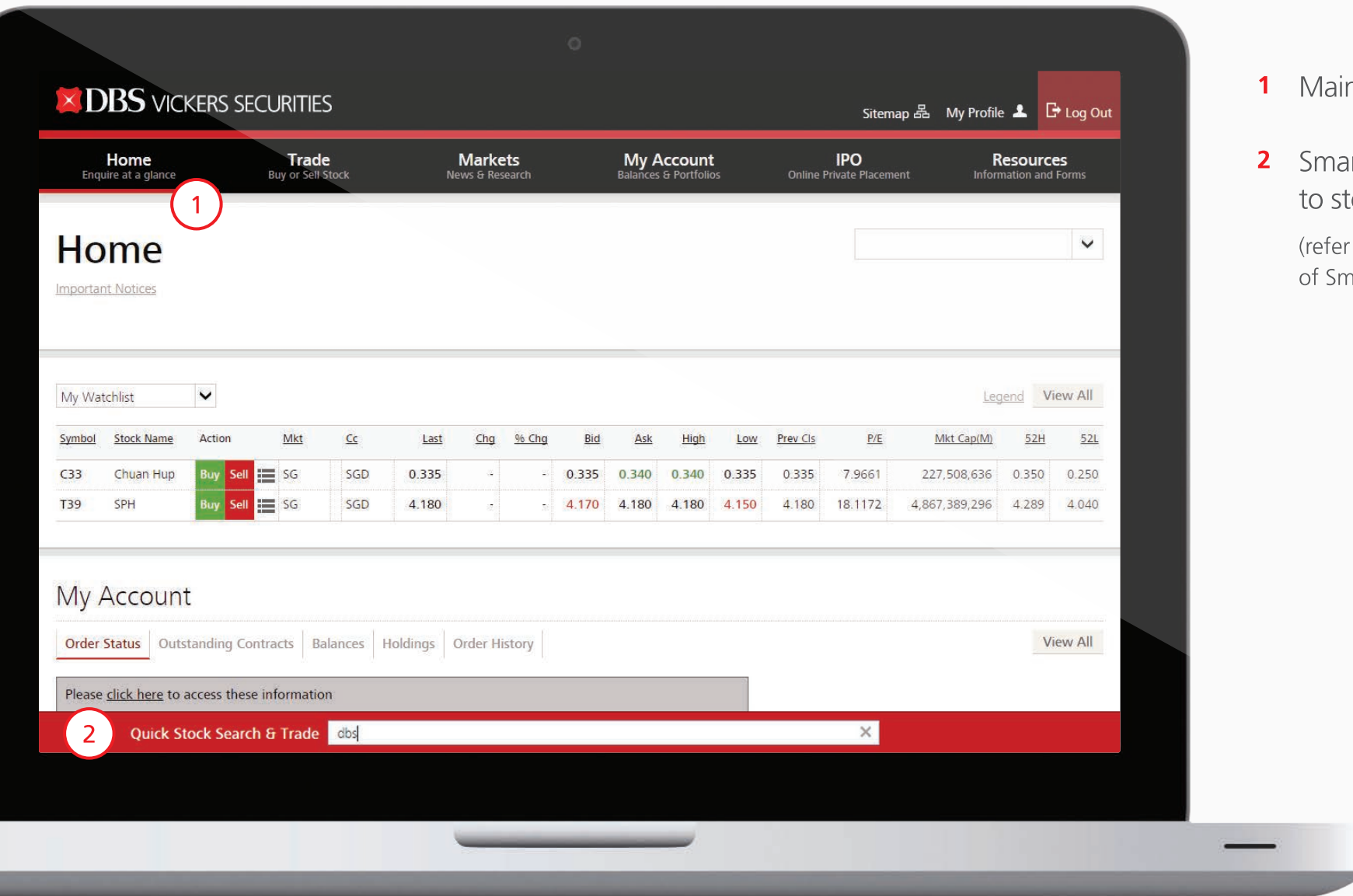
Password criteria:

- ▶ Minimum 8 and maximum 25 characters
- ▶ Must be alpha-numeric.

- 2 Click on **Log in** to begin.



- 1 Generate a One-Time PIN (OTP) using either your 2FA Secure Device or via SMS.
- 2 Enter the One-Time PIN (OTP) into the box.
- 3 Click on **Continue** to begin.



1 Main navigation bar

2 Smart Search - quick access to stock information.

(refer to next slide for illustration of Smart Search function)

DBS VICKERS SECURITIES

Sitemap My Profile Log Out

Home Enquire at a glance **Trade** Buy or Sell Stock **Markets** News & Research **My Account** Balances & Portfolios **IPO** Online Private Placement **Resources** Information and Forms

Home

[Important Notices](#)

SG stocks Legend View All


Symbol	Stock Name	Action	Mkt	Rmk	Cc	Last	Chg	% Chg	Bid	Ask	Vol	High	Low	Open
D05	DBS	Buy Sell	SG		SGD	16.510	0.190	1.160	16.510	16.520	4,183,100	16.560	16.350	16.350
C6L	SIA	Buy Sell	SG		SGD	10.800	-0.050	-0.460	10.800	10.810	1,648,300	10.960	10.780	10.880
R01	Raffles Medical	Buy Sell	SG		SGD	4.200	-0.030	-0.710	4.200	4.210	311,700	4.240	4.200	4.210
S53	SMRT	Buy Sell	SG		SGD	1.435	-	-	1.435	1.440	1,124,800	1.455	1.415	1.440
G13	Genting Sing	Buy Sell	SG		SGD	0.760	0.005	0.660	0.760	0.765	15,079,800	0.770	0.755	0.760
Y92	ThaiBev	Buy Sell	SG		SGD	0.670	-	-	0.670	0.675	3,500,400	0.680	0.670	0.675
AU8U	CapitaR China Tr	Buy Sell	SG		SGD	1.500	0.025	1.690	1.495	1.500	906,600	1.510	1.480	1.510
O39	OCBC Bank	Buy Sell	SG		SGD	8.650	0.090	1.050	8.650	8.660	4,352,100	8.670	8.590	8.590

Next >

1 Quick Stock Search & Trade D05 DBS SG **2** Trade **3**

Last	20.310	Chg	0.080	Bid	20.310	Bid Vol	7,000	High	20.320	Open	20.190	Lot	100	52High	21.500
Vol (Shr)	2,334,500	% Chg	0.400	Ask	20.320	Ask Vol	20,600	Low	20.130	Prev Cls	20.230	Turnover	47,229,651.000	52Low	17.620

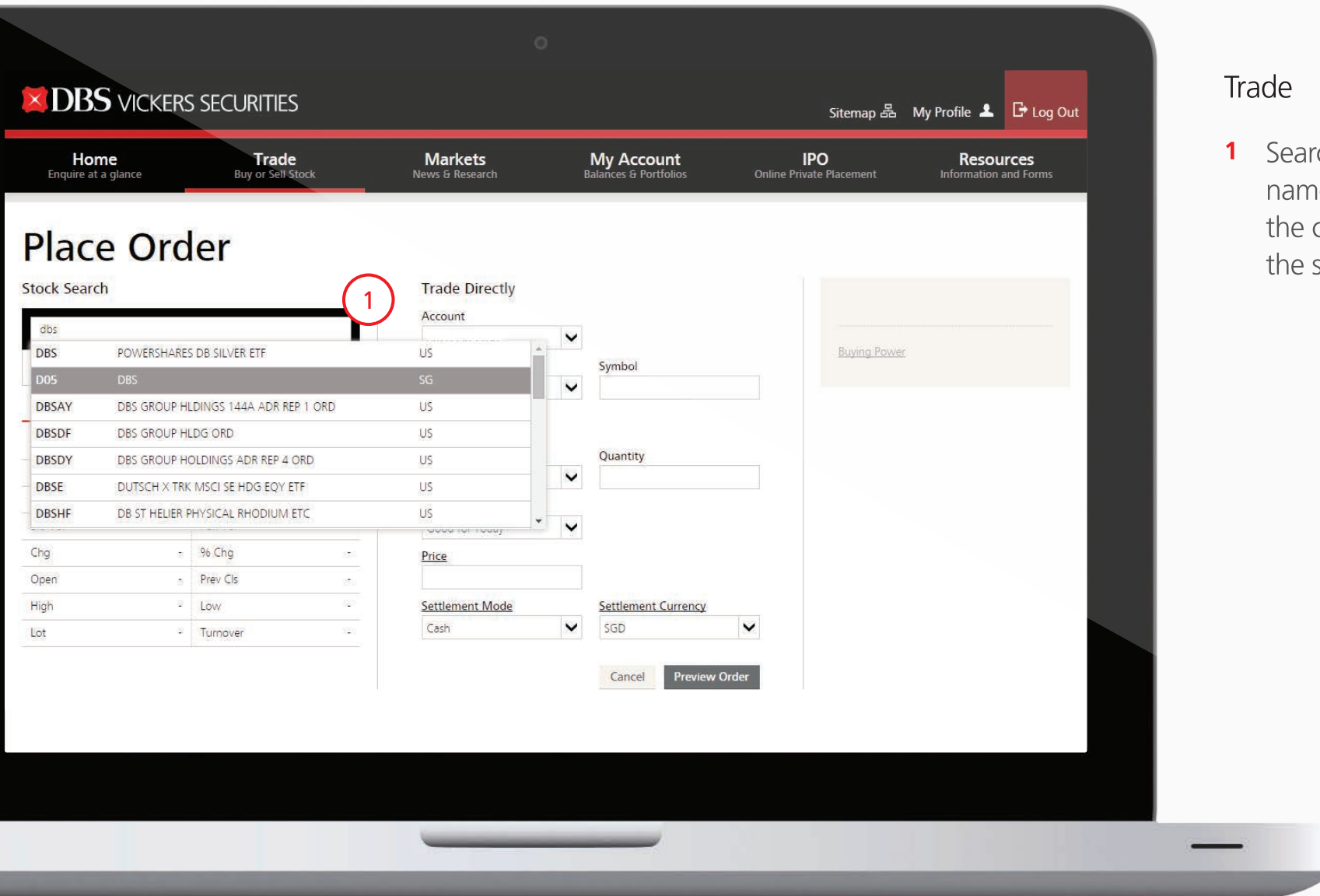
4 More Details

- 1 Enter stock symbol / name and click on the correct symbol to bring up current market information about share counter.
- 2 Click on **Trade** to place trade.
- 3 Click on refresh symbol  to refresh stock data.
- 4 Click on [More Details](#) to access overview details of the stock.



Trade > Place Order

- 1 Search by entering company name or stock code and click on the correct option that is found in the search result.





The screenshot shows the 'Place Order' page on the DBS Vickers Securities website. The page is divided into several sections:

- Stock Search:** A search bar with 'D05', 'DBS', and 'SG' entered. Below it, a table shows stock details for DBS (Symbol: D05, Market: SG). Callout 1 points to the 'Details' tab.
- Trade Directly:** A section for placing orders. Callout 2 points to the 'Market' dropdown (Singapore). Callout 3 points to the 'Order Type' dropdown (Limit Order). Callout 4 points to the 'Quantity' input field. Callout 5 points to the 'Settlement Mode' dropdown (Cash). Callout 6 points to the 'Preview Order' button.
- Order Details:** A section for specifying order parameters. Callout 3 points to the 'Order Type' dropdown (Limit Order). Callout 4 points to the 'Quantity' input field. Callout 5 points to the 'Settlement Mode' dropdown (Cash). Callout 6 points to the 'Preview Order' button.

Callout 1 points to the 'Details' tab in the Stock Search section.

Callout 2 points to the 'Market' dropdown menu.

Callout 3 points to the 'Order Type' dropdown menu.

Callout 4 points to the 'Quantity' input field.

Callout 5 points to the 'Settlement Mode' dropdown menu.

Callout 6 points to the 'Preview Order' button.

- 1 Chosen stock data will be populated. You can also view other data types by choosing other tabs.
- 2 Select the markets that you wish to trade in. Markets offered include SG, HK, US and CA.
- 3 A list of Order Type explanations may be found in [FAQ](#).
- 4 Enter the quantity (in terms of unit share).
- 5 If the chosen stock can be settled using SRS or CPFIS funds, the options will be available for selection under Settlement Mode. (Subject to types of accounts linked)
- 6 Select **Preview Order** to proceed.



Order Preview

1

Transaction Details

Transaction Value

Total Contract Value	SGD 1,643.00
Commission	SGD 12.00
Clearing Fee	SGD 0.53
SGX Trading Fee	SGD 0.12
GST	SGD 0.89
Total Commission & Fees	SGD 13.54
Indicative Total Proceed	SGD 1,656.54

Stock Details

Last	16.430	Vol	2,004,400
Bid	16.420	Ask	16.430
Bid Vol	29,400	Ask Vol	11,900
Cng	-0.080	% Cng	-0.480
Open	16.460	Prev Cls	16.510
High	16.480	Low	16.360
Lot	100	Turnover	32,978,518.700

Account

Action	Stock Name
Buy	DBS
Market	Symbol
Singapore	D05
Order Type	Quantity (Lot Size:100)
Limit Order	100
Order Duration	Date
Good for Today	10/12/2015
Price	
SGD 16.430	
Settlement Mode	Settlement Currency
Cash	SGD

2

1 Order Preview page displays a summary of the order details.

2 Check and verify the details of the order and click on **Confirm Order** to submit.

You may also or the order.



Trade > Order Status

Order Status displays working orders or any orders submitted for an incoming trading day.

Expired or fully executed orders will be shown in the 'History' section of 'My Account' tab the next day

Good till date orders will continue to appear in the Order Status page until orders are either fully executed or expired.

Orders may be cancelled or amended in the Action section.

Order Status

Auto Refresh

On

Off



Display status of orders

This page displays current orders. To check your past orders, please go to [Order History](#).

All Orders



Symbol	Stock Name/Transaction ID	Market	Action	Quantity	Price	Settlement Mode	Filled Quantity	Filled Price	Outstanding Quantity	Status	Order Date/Time	More Action
D05	DBS 20151211000002243	SG	Buy	100	SGD2.720	Cash	-	-	100	Queuing	11/12/2015 11:42:15 AM	

Order details are moved to the History page after the market close.

Note: Fully executed orders cannot be cancelled and only the non-executed part of a partially filled order can be cancelled.




Trade > Watchlist

All-in-one place to manage your trading.

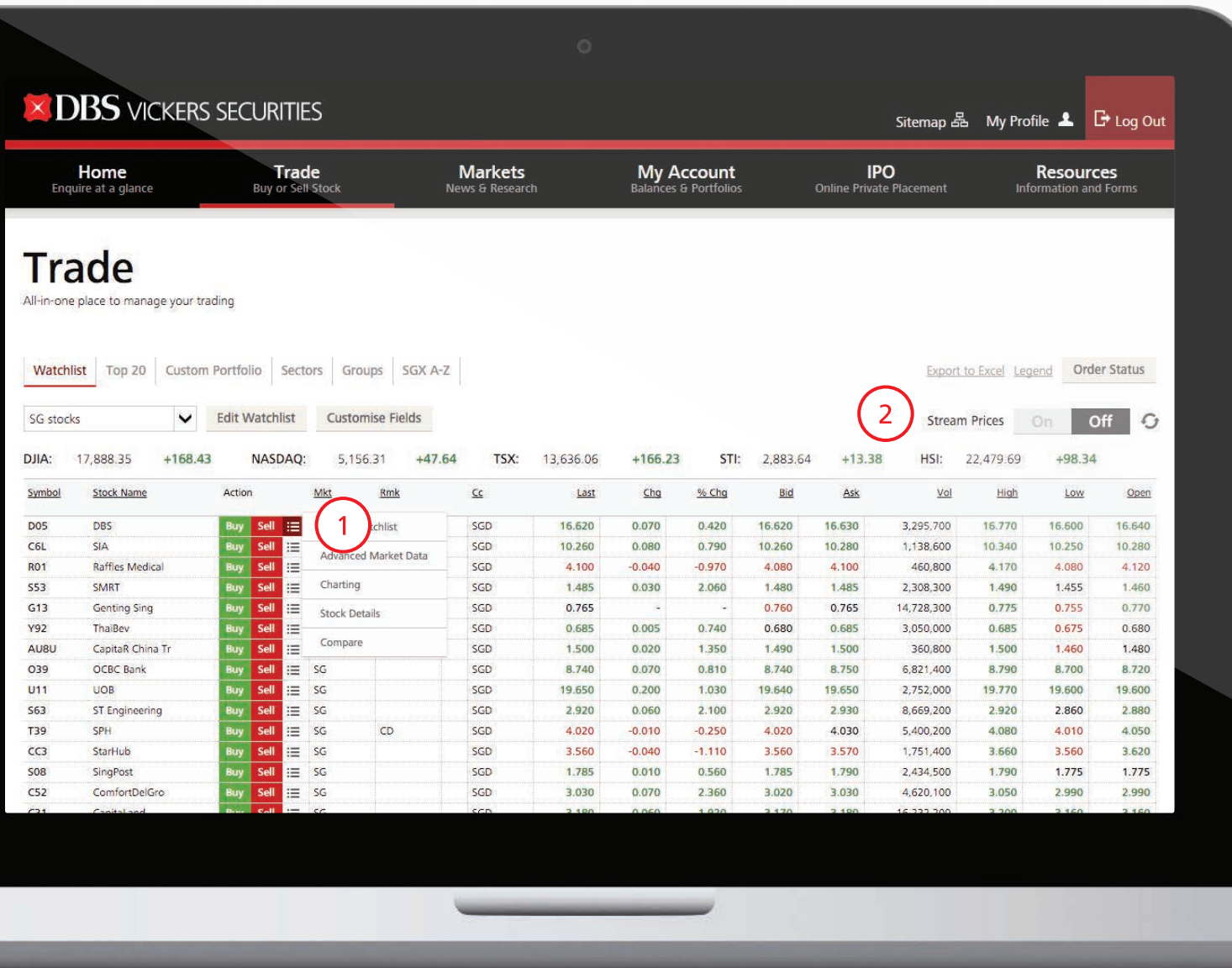
Save and edit up to 5 Watchlists.

Maximum of 30 stocks per list, or choose to view by top 20, custom portfolio, sector, groups or SG stocks listing A-Z.

Customisation of fields for variables to monitor stock performance.

1 Move cursor to access smart functions  or click on **Buy** **Sell** to place a trade.

2 Toggle for streaming.



DBS VICKERS SECURITIES

Sitemap My Profile Log Out

Home Enquire at a glance
Trade Buy or Sell Stock
Markets News & Research
My Account Balances & Portfolios
IPO Online Private Placement
Resources Information and Forms

Trade

All-in-one place to manage your trading

Watchlist Top 20 Custom Portfolio Sectors Groups SGX A-Z

Export to Excel Legend Order Status

SG stocks Edit Watchlist Customise Fields

Stream Prices On Off

DJIA: 17,888.35 +168.43 NASDAQ: 5,156.31 +47.64 TSX: 13,636.06 +166.23 STI: 2,883.64 +13.38 HSI: 22,479.69 +98.34

Symbol	Stock Name	Action	Mkt	Rmk	Cc	Last	Chg	% Chg	Bid	Ask	Vol	High	Low	Open
D05	DBS	Buy Sell	Watchlist		SGD	16.620	0.070	0.420	16.620	16.630	3,295,700	16.770	16.600	16.640
C6L	SIA	Buy Sell	Advanced Market Data		SGD	10.260	0.080	0.790	10.260	10.280	1,138,600	10.340	10.250	10.280
R01	Raffles Medical	Buy Sell			SGD	4.100	-0.040	-0.970	4.080	4.100	460,800	4.170	4.080	4.120
S53	SMRT	Buy Sell	Charting		SGD	1.485	0.030	2.060	1.480	1.485	2,308,300	1.490	1.455	1.460
G13	Genting Sing	Buy Sell	Stock Details		SGD	0.765	-	-	0.760	0.765	14,728,300	0.775	0.755	0.770
Y92	ThaiBev	Buy Sell	Compare		SGD	0.685	0.005	0.740	0.680	0.685	3,050,000	0.685	0.675	0.680
AU8U	CapitaR China Tr	Buy Sell			SGD	1.500	0.020	1.350	1.490	1.500	360,800	1.500	1.460	1.480
O39	OCBC Bank	Buy Sell	SG		SGD	8.740	0.070	0.810	8.740	8.750	6,821,400	8.790	8.700	8.720
U11	UOB	Buy Sell	SG		SGD	19.650	0.200	1.030	19.640	19.650	2,752,000	19.770	19.600	19.600
S63	ST Engineering	Buy Sell	SG		SGD	2.920	0.060	2.100	2.920	2.930	8,669,200	2.920	2.860	2.880
T39	SPH	Buy Sell	SG	CD	SGD	4.020	-0.010	-0.250	4.020	4.030	5,400,200	4.080	4.010	4.050
CC3	StarHub	Buy Sell			SGD	3.560	-0.040	-1.110	3.560	3.570	1,751,400	3.660	3.560	3.620
S08	SingPost	Buy Sell	SG		SGD	1.785	0.010	0.560	1.785	1.790	2,434,500	1.790	1.775	1.775
C52	ComfortDelGro	Buy Sell	SG		SGD	3.030	0.070	2.360	3.020	3.030	4,620,100	3.050	2.990	2.990



Edit Watchlist

Watchlist Name: [Edit Name](#) **1**

☐ Set as default Watchlist

Search stock to add to this Watchlist: **2**

Watchlist Stocks		
T06	Tiong Woon	SG
D05	DBS	SG
C52	ComfortDelGro	SG
T39	SPH	SG
S63	ST Engineering	SG
Z74	SingTel	SG
B2F	M1	SG
CC3	StarHub	SG
D39	DBS Bank	SG

4

- 1** Select Watchlist to edit, customise watchlist name.
- 2** Search for stock counters by company name or stock symbol.
- 3** Add or remove search results to/from the list.
- 4** Click on **Save Changes** to save Watchlist.



Advanced Market Data

No default template. You may create and save a new template

Load Default

Save As Default

2

D05	DBS	SG	Buy	Sell	C6L	SIA	SG	Buy	Sell
Trade Distribution					Trade Distribution				
Last Done Price 16.710 Change -0.130 High 16.800 Volume 2,918,300 %Change -0.780 Low 16.660					Last Done Price 10.570 Change -0.150 High 10.700 Volume 1,162,100 %Change -1.440 Low 10.500				
Price	Trades	Volume	Sold to Buyer	Bought from Seller	*Other	Bid Volume	Bid	Ask	Ask Volume
16.580	1	14,400	0	0	14,400	21000	10.570	10.590	16900
16.660	1	7,100	7,100	0	0	11900	10.560	10.600	3700
16.670	16	151,900	9,800	140,100	2,000	10700	10.550	10.620	4000
16.680	25	83,900	49,600	31,500	2,800	10600	10.540	10.630	14100
16.690	29	28,900	12,500	16,200	200	25700	10.530	10.640	13400
16.700	146	149,700	110,500	39,200	0	68700	10.520	10.650	4000
16.710	88	511,800	403,800	101,600	6,400	39500	10.510	10.660	34800
16.720	300	265,200	164,800	124,400	3,000	40100	10.500	10.670	21800


Others* : off-market transaction

D05				DBS		SG		1		Buy		Sell		C6L				SIA		SG		Buy		Sell			
Trade Distribution				Bid & Ask		Time & Sales						Trade Distribution				Bid & Ask		Time & Sales									
Last Done Price				16.710		Volume		2,918,300						Last Done Price				10.570		Volume		1,162,100					
Change				-0.130		%Change		-0.780						Change				-0.150		%Change		-1.440					
High				16.800		Low		16.660						High				10.700		Low		10.500					
<div>Trade with transaction value more than \$100K</div>																											
Time				Price		Trade Size		Action						Price		Trades		Volume		Sold to Buyer		Bought from Seller		*Other			
														10.420		1		17,200		0		0		17,200			

Trade with transaction value more than \$100K

Trade > Advanced Market Data

Able to monitor 4 stocks at the same time, on the same page. Allows dynamic data feeds and viewing of Trade Distribution, Bid & Ask, as well as Time & Sales data feeds.

- 1 Access smart functions  and place trades. Buy Sell
- 2 Click on Save As Default to save template as a default template for easy future access.

Advanced Market Data

No default template. You may create and save a new template

Load Default

Save As Default

D05	DBS	SG	Buy	Sell	C6L	SIA	SG	Buy	Sell
Trade Distribution					Trade Distribution				
Last Done Price	16.710	Volume	2,918,300		Last Done Price	10.570	Volume	1,162,100	
Change	+0.130	%Change	+0.780		Change	+0.150	%Change	+1.440	
High	16.800	Low	16.660		High	10.700	Low	10.500	
Price	Trades	Volume	Sold to Buyer	Bought from Seller	*Other	Bid Volume	Bid	Ask	Ask Volume
16.580	1	14,400	0	0	14,400	21000	10.570	10.590	16900
16.660	1	7,100	7,100	0	0	11900	10.560	10.600	3700
16.670	16	151,900	9,800	140,100	2,000	10700	10.550	10.620	4000
16.680	25	83,900	49,600	31,500	2,800	10600	10.540	10.630	14100
16.690	29	28,900	12,500	16,200	200	25700	10.530	10.640	13400
16.700	146	149,700	110,500	39,200	0	68700	10.520	10.650	4000
16.710	88	511,800	403,800	101,600	6,400	39500	10.510	10.660	34800
16.720	300	265,200	164,800	124,400	3,000	40100	10.500	10.670	21800

Others* : off-market transaction

D05	DBS	SG	Buy	Sell	C6L	SIA	SG	Buy	Sell
Trade Distribution					Trade Distribution				
Last Done Price	16.710	Volume	2,918,300		Last Done Price	10.570	Volume	1,162,100	
Change	+0.130	%Change	+0.780		Change	+0.150	%Change	+1.440	
High	16.800	Low	16.660		High	10.700	Low	10.500	
Trade with transaction value more than \$100K									
Time	Price	Trade Size	Action		Price	Trades	Volume	Sold to Buyer	Bought from Seller
					10.420	1	17,200	0	0

1 Advanced Market Data > Trade Distribution

Trade Distribution shows the current trading day's trade distribution. It displays how many trades each price and volume are spread over.

*Other section refers to trade that is not executed at the exchange floor and could be in the form of a married trade or Equity Swap between corporations.

2 Advanced Market Data > Bid & Ask

Bid & Ask displays the next price queue after the current Bid & Ask price.

3 Advanced Market Data > Time & Sales

Time & Sales displays the transaction's execution point over the spread of the trade day.



Transaction Screener

2015-12-10 SGX Transaction Amt > \$1M Stock ALL Price ALL

1

Transaction

Update Time	Symbol	Stock Name	Action	Price	Trade size	Amount	Bid Ask
10:06:41	Z74	SingTel	Buy Sell	3.830	295,800	1,132,914	Bought from Seller
10:06:32	P34	Petra Foods	Buy Sell	2.200	778,400	1,712,480	*Others
09:54:08	C38U	CapitaMall Trust	Buy Sell	1.870	655,400	1,225,598	Sold to Buyer
09:41:12	A17U	Ascendas Reit	Buy Sell	2.210	554,100	1,224,561	Sold to All Buyer
09:37:47	A17U	Ascendas Reit	Buy Sell	2.220	1,144,700	2,541,234	Sold to All Buyer
09:36:03	Z74	SingTel	Buy Sell	3.820	354,400	1,353,808	Sold to Buyer
09:30:07	Z74	SingTel	Buy Sell	3.820	345,700	1,320,574	Bought from Seller
09:29:35	A17U	Ascendas Reit	Buy Sell	2.230	1,554,200	3,465,866	Bought from Seller
09:29:26	A17U	Ascendas Reit	Buy Sell	2.230	478,000	1,065,940	Sold to Buyer
09:28:31	A17U	Ascendas Reit	Buy Sell	2.230	987,100	2,201,233	Sold to Buyer
09:16:43	A17U	Ascendas Reit	Buy Sell	2.220	752,300	1,670,106	Bought from Seller
09:11:58	A17U	Ascendas Reit	Buy Sell	2.230	468,400	1,044,532	Bought from Seller
09:10:54	A17U	Ascendas Reit	Buy Sell	2.230	698,600	1,557,878	Bought from Seller
09:06:50	C38U	CapitaMall Trust	Buy Sell	1.870	567,600	1,061,412	Bought from Seller
08:58:38	D05	DBS	Buy Sell	16.460	203,600	3,351,256	Sold to All Buyer
08:58:38	N03	NOL	Buy Sell	1.220	2,815,700	3,435,154	Bought from All Seller
08:58:38	O39	OCBC Bank	Buy Sell	8.680	247,900	2,151,772	Bought from All Seller
08:58:38	A17U	Ascendas Reit	Buy Sell	2.260	1,168,800	2,641,487	Bought from All Seller
08:58:38	Z74	SingTel	Buy Sell	3.820	459,200	1,754,144	Bought from All Seller
08:35:00	S68	SGX	Buy Sell	7.450	250,000	1,862,500	*Others
08:35:00	C09	CityDev	Buy Sell	7.180	312,000	2,240,160	*Others
08:35:00	D05	DBS	Buy Sell	16.510	700,700	11,568,557	*Others

Records no:22

Summary

Symbol	Stock Name	Txns	Bought	Sold	*Others
A17U	Ascendas Reit	9	5	4	0
Z74	SingTel	4	3	1	0
C38U	CapitaMall Trust	2	1	1	0
D05	DBS	2	0	1	1
C09	CityDev	1	0	0	1
N03	NOL	1	1	0	0
O39	OCBC Bank	1	1	0	0
P34	Petra Foods	1	0	0	1
S68	SGX	1	0	0	1

Others* : off-market transaction

Trade > Transaction Screener

- 1 Track and locate trade information of certain sizes. You may filter transactions that fall within the specified range in terms of contract value or price.



Trade >

Commission Calculator

Calculates the estimated brokerage commission charges for your trades.

Commission Calculator

[Singapore Stocks](#) [Hong Kong Stocks](#) [U.S. Stocks](#) [Canada Stocks](#)

To calculate the estimated commission for an online trade, please enter the stock quantity and trading price and click on 'Calculate'.

Transaction ☒ Buy ☐ SellStock Quantity (Shares) Trading Price Trade Currency [Reset](#)[Calculate](#)

Markets > News

Access sectors' news feed provided by Thomson Reuters.

- 1 Click on headlines to access the content of the news.
- 2 News that are directly/ indirectly related to stocks in your Watchlist/Custom Portfolio will be indicated next to the news.

Singapore News ▾

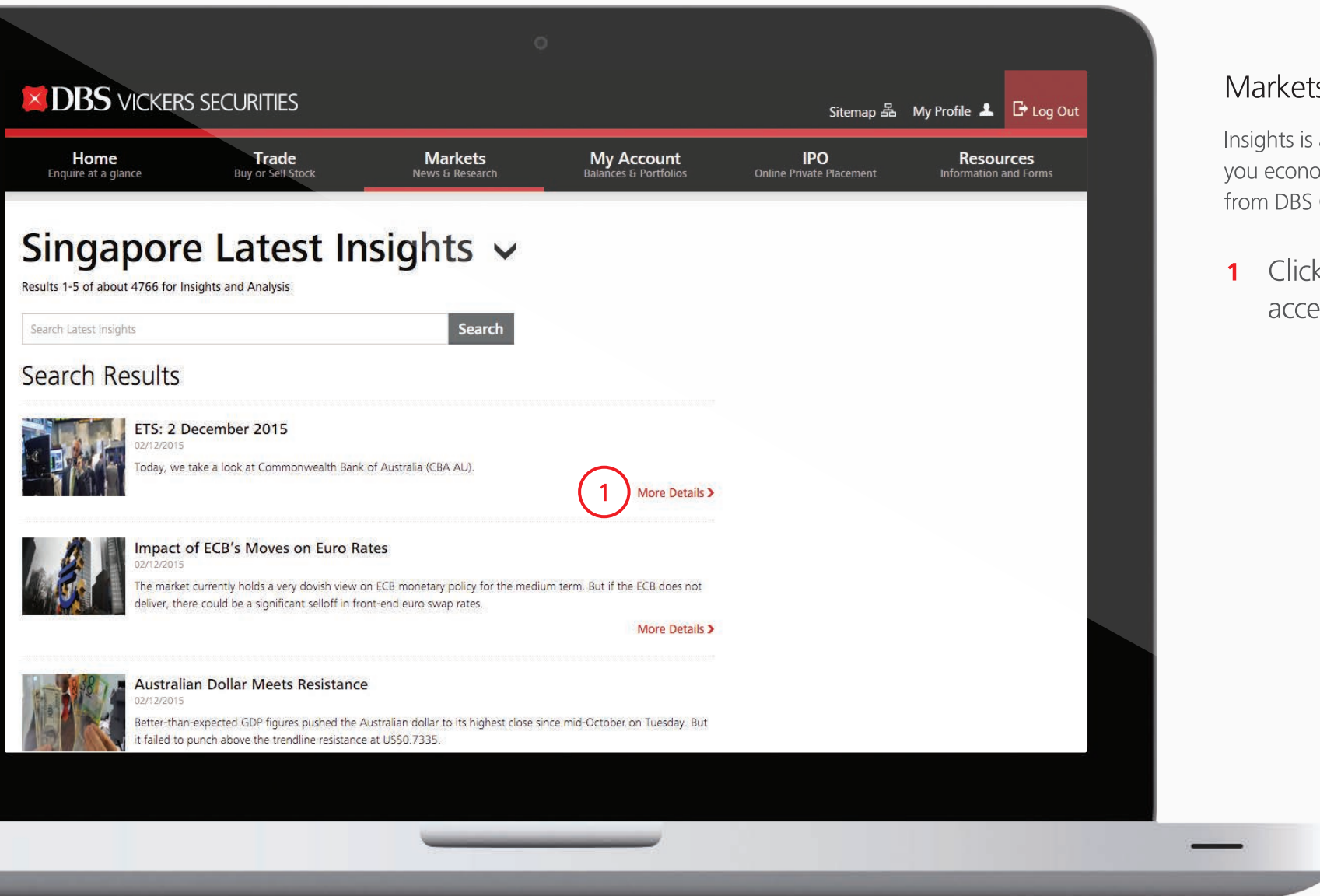
All Sectors Currencies Debt Yields Interest Rates Energies Metals Sports

Date	Description	Related to
06/01/2016 02:51 PM	PDF 1: WEIYE HOLDINGS LIMITED (General Announcement)	Watchlist
06/01/2016 02:51 PM	WEIYE HOLDINGS LIMITED (General Announcement)	Watchlist
06/01/2016 02:21 PM	BUZZ-Asia Ex-Japan: FII capitulation add to hopes of a positive 2016	
06/01/2016 02:18 PM	PDF 1: SINGAPORE AIRLINES LIMITED (Employee Stock Option/ Share Scheme)	Watchlist & Portfolio
06/01/2016 02:18 PM	SINGAPORE AIRLINES LIMITED (Employee Stock Option/ Share Scheme)	Watchlist & Portfolio
06/01/2016 02:02 PM	EM ASIA FX-Won weakens on N.Korea nuclear test; yuan, China woes hit Asi...	
06/01/2016 01:50 PM	PDF 1: SINGAPORE EXCHANGE SECURITIES TRADING LIMITED (Buying-in)	
06/01/2016 01:50 PM	SINGAPORE EXCHANGE SECURITIES TRADING LIMITED (Buying-in)	

Markets > Insights

Insights is a brand new feature that brings you economic and strategic views straight from DBS Group Research.

- 1 Click on [More Details >](#) to access the full report.



Markets > Reports

The Reports tab gives you access to recommendation reports from DBS Group Research.

- 1 Select your area of focus.

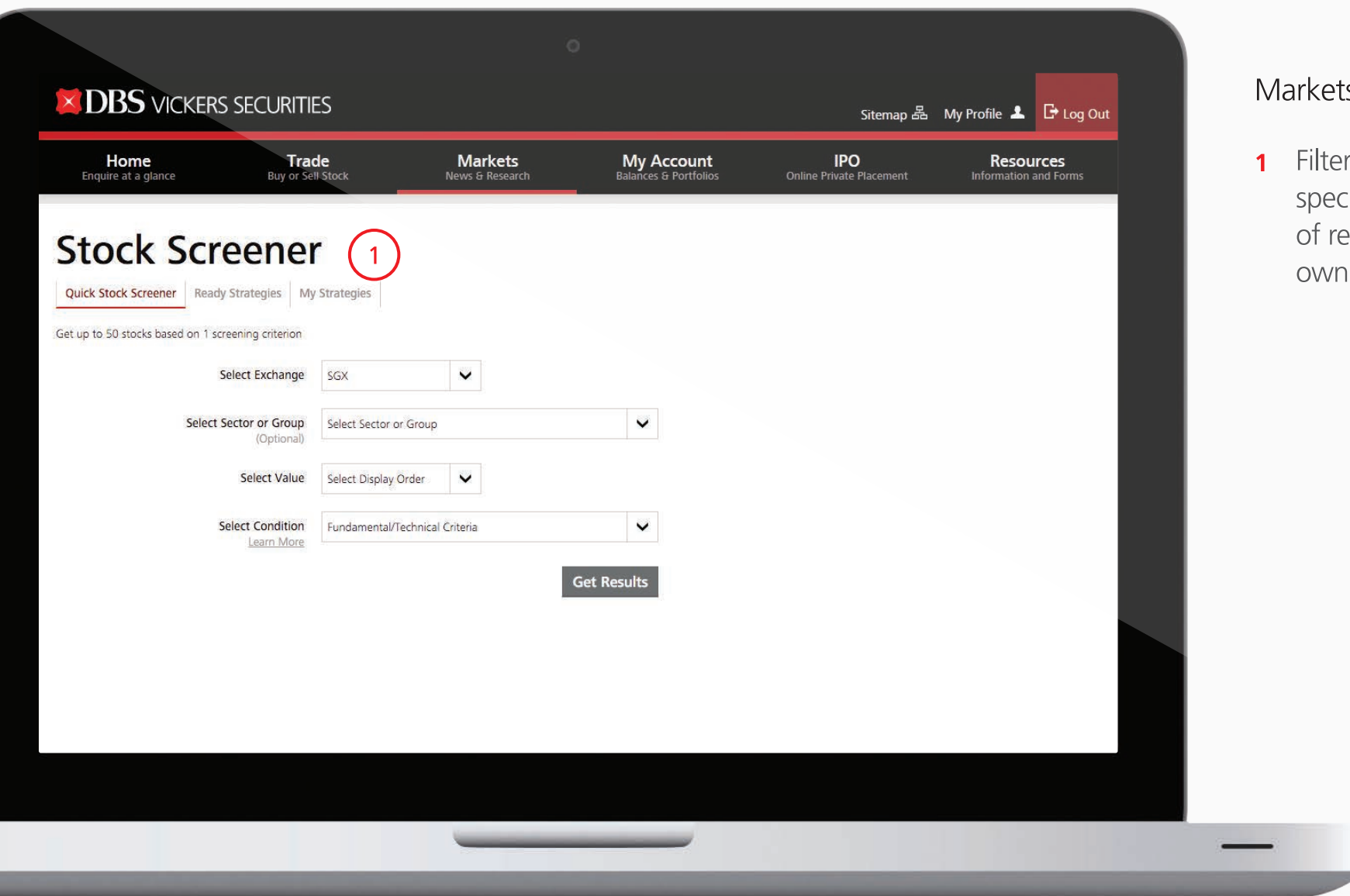
Reports

1

Select Category

▼

Date	Description
02/12/2015 02:02:00 PM	Asian Pay Television Trust - Slow network expansion
02/12/2015 11:11:00 AM	Wired Daily - Today's Focus
02/12/2015 11:10:00 AM	Sembcorp Marine - Slipping into the red
02/12/2015 11:08:00 AM	Hong Kong Daily Focus - Daily Focus
02/12/2015 11:06:00 AM	Hong Kong Regional Morning Pack - Regional Morning Pack
01/12/2015 11:58:00 AM	Hong Kong Daily Focus - Daily Focus
01/12/2015 11:56:00 AM	Hong Kong MTR Corporation - In right direction
01/12/2015 11:51:00 AM	Hong Kong Monthly market pulse - Improved risk-reward after Nov
01/12/2015 11:46:00 AM	Midas Holdings - Recovery underway
01/12/2015 11:43:00 AM	Hong Kong Regional Morning Pack - REGIONAL
01/12/2015 11:41:00 AM	Wired Daily - Today's Focus
30/11/2015 05:11:00 PM	Hong Kong HK Property - Central office on the rebound



Markets > Stock Screener

- 1 Filter and pick stocks based on specified criteria. Choose from sets of ready strategies or create your own strategies for stock picking.

Stock Screener Results

Quick Stock Screener

Exchange: SGX Sector: Real Estate Investment Trust

■ Bvps - Highest - [Ratios] Book Value Per Share

[Export To Excel](#)
[Edit Strategy](#)
[Save Strategy](#)

Symbol	Stock Name	Action	Sector	SW	CCY	Prev Cls	Bvps	Report Year	Rat Ccy
T8JU	Saizen Reit	Buy Sell	REIT - Residential / Commercial		SGD	1.085	102.511	2015	JPY
F25U	Fortune Reit HKD	Buy Sell	REIT - Residential / Commercial		HKD	7.810	11.862	2014	HKD
T82U	Suntec Reit	Buy Sell	REIT - Residential / Commercial		SGD	1.580	2.100	2014	SGD
A17U	Ascendas Reit	Buy Sell	REIT - Residential / Commercial		SGD	2.350	2.081	2015	SGD
J69U	Frazers Cpt Tr	Buy Sell	REIT - Residential / Commercial		SGD	1.865	1.852	2015	SGD
C38U	CapitalMall Trust	Buy Sell	REIT - Residential / Commercial		SGD	1.930	1.774	2014	SGD
BESU	Indiabulls Trust	Buy Sell	Real Estate Operations		SGD	0.260	1.762	2015	SGD
C61U	CapitaCom Trust	Buy Sell	REIT - Residential / Commercial		SGD	1.345	1.745	2014	SGD
C2PU	ParkwayLife Reit	Buy Sell	Healthcare Providers / Services		SGD	2.270	1.711	2014	SGD
AU8U	CapitaR China Tr	Buy Sell	REIT - Residential / Commercial		SGD	1.460	1.601	2014	SGD
O5RU	AIMSAMP Cap Reit	Buy Sell	REIT - Residential / Commercial		SGD	1.360	1.516	2015	SGD
A68U	Ascott Reit	Buy Sell	REIT - Residential / Commercial		SGD	1.180	1.456	2014	SGD
ND8U	Frazers Com Tr	Buy Sell	REIT - Residential / Commercial		SGD	1.315	1.391	2015	SGD
K71U	Keppel Reit	Buy Sell	REIT - Residential / Commercial		SGD	0.960	1.386	2014	SGD
ME8U	Mapletree Ind Tr	Buy Sell	REIT - Residential / Commercial		SGD	1.515	1.295	2015	SGD
N2IU	Mapletree Com Tr	Buy Sell	REIT - Residential / Commercial		SGD	1.315	1.234	2015	SGD

1 Move cursor to access smart functions or click on [Buy](#) [Sell](#) to place a trade.

2 Click on [Export To Excel](#) to export your strategies.

3 Edit your strategies by clicking on [Edit Strategy](#). You can save up to 5 strategies


Markets > Stock Search

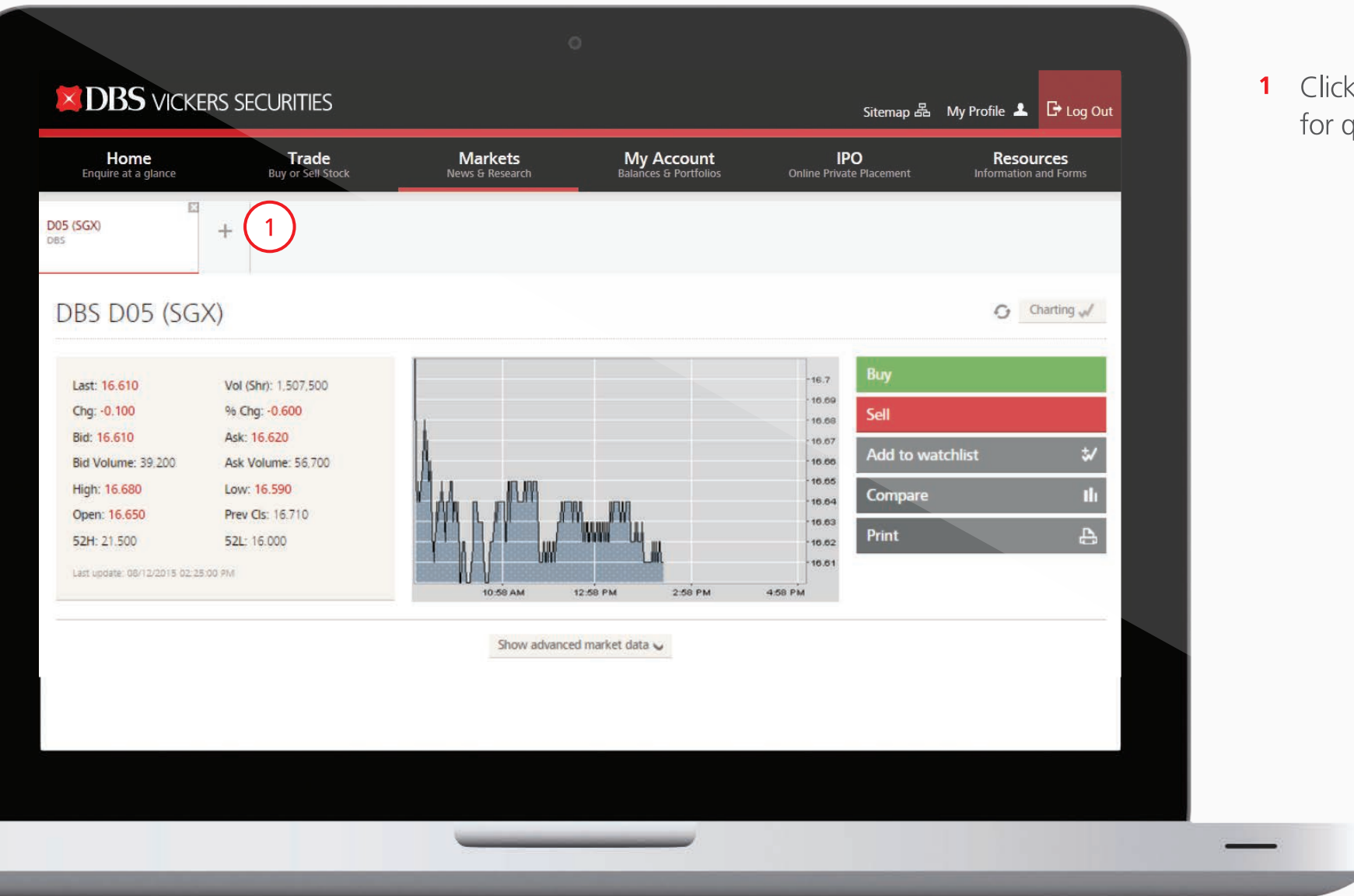
- 1 Enter Stock Name or Symbol to display the fundamental data of the company.

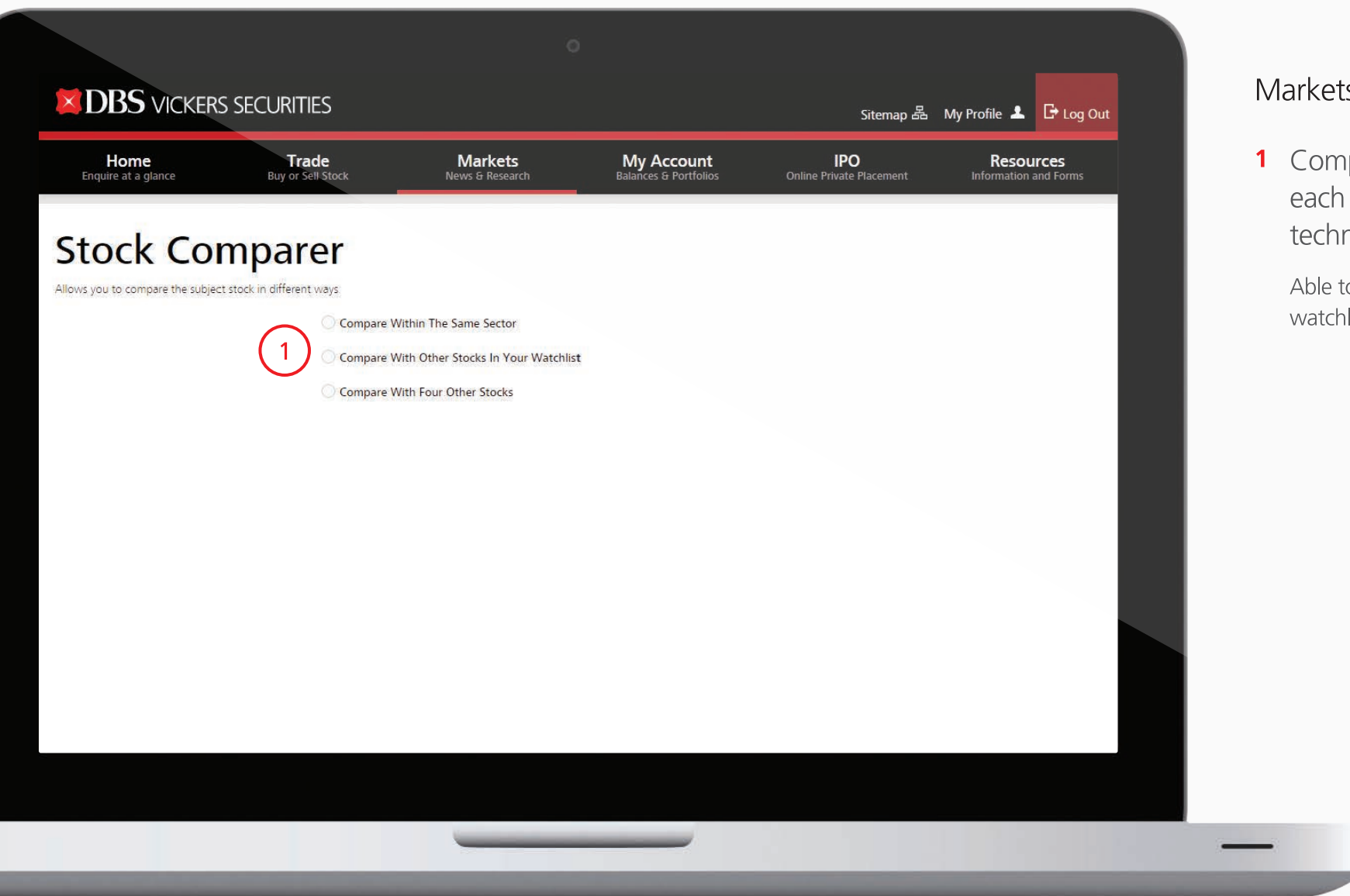
Stock Search

1

DBS		
D05	DBS	SG
ANBW	DBS MB eCW160601@	SG
BEFW	DBS MB eCW160111@	SG
BEGW	DBS MB ePW160111@	SG
BFLW	DBS MB eCW160201@	SG
BFMW	DBS MB ePW160201@	SG
BGRW	DBS VT eCW160201@	SG

- 1 Click  to add multiple stocks for quick toggling.





Markets > Stock Comparer

- 1 Compare specified stocks against each other's fundamental / technical data.

Able to compare stocks in the same sector, watchlist or 4 other counters of your choice.

Stock Comparer - Results

1

Add/Remove Comparison Fields

Export To Excel

Symbol	Stock Name	Action	Sector	SW	Trd Ccy	Prev Cls	DivYld	Pe	Rsl14d	Report Year
SQY	S Net Pacific Fin	Buy Sell	Banking Services	-	SGD	0.033	5.934	20.208	34.467	2014
D05	DBS	Buy Sell	Banking Services	SW	SGD	16.550	3.505	9.516	35.099	2014
I49	IFS Capital	Buy Sell	Banking Services	-	SGD	0.335	4.478	45.556	42.686	2014
O39	OCBC Bank	Buy Sell	Banking Services	SW	SGD	8.670	4.152	9.516	32.819	2014
S23	Spura Finance	Buy Sell	Banking Services	-	SGD	0.915	2.186	34.386	40.135	2015
S35	Sing Inv & Fin	Buy Sell	Banking Services	-	SGD	1.235	4.858	17.392	55.198	2014
S41	Hong Leong Fin	Buy Sell	Banking Services	-	SGD	2.370	4.219	15.858	50.331	2014
U11	UOB	Buy Sell	Banking Services	SW	SGD	19.450	4.370	10.056	41.415	2014
T61	ValueMax	Buy Sell	Banking Services	-	SGD	0.295	2.983	16.307	57.768	2014

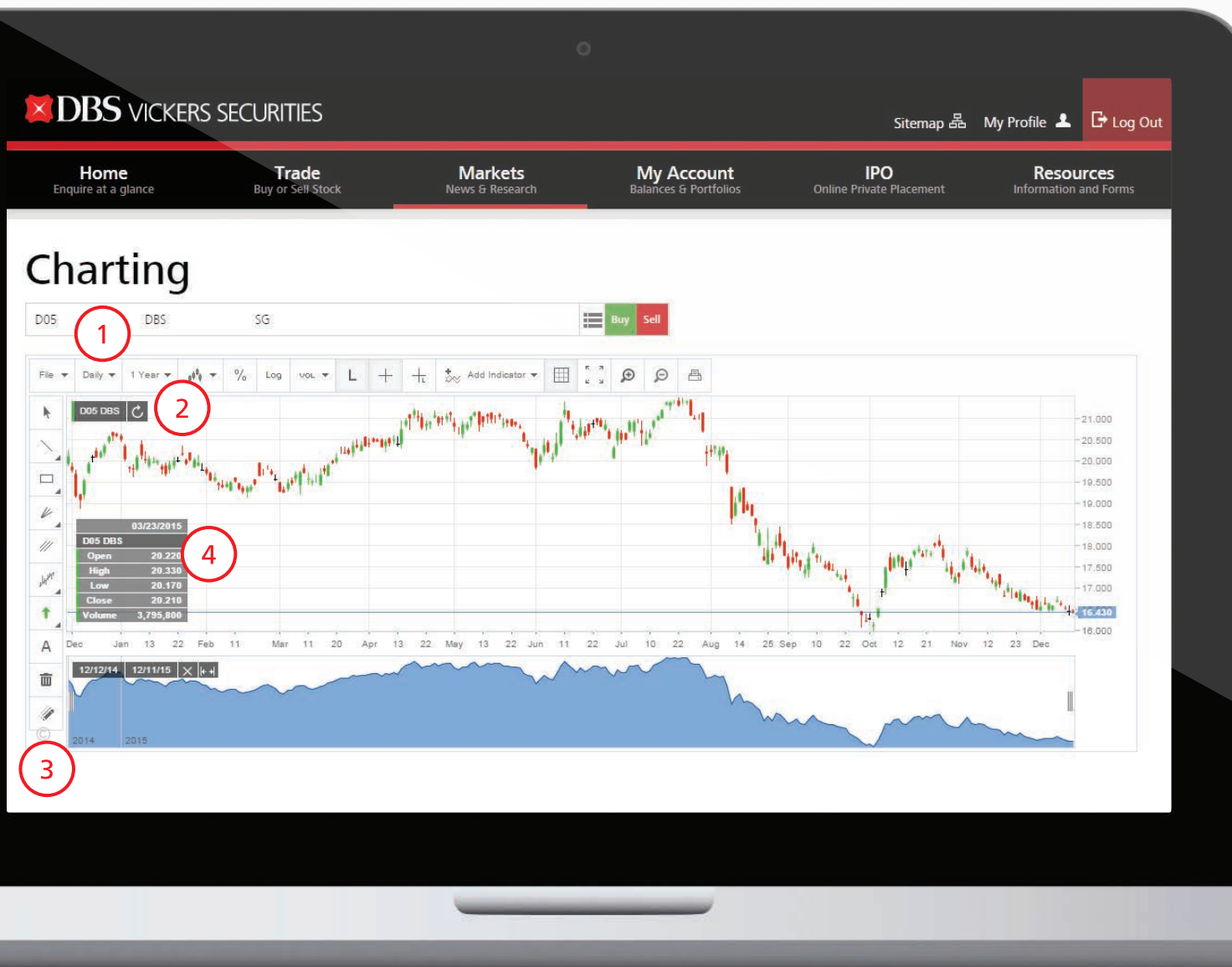
Note

"@" symbol at the end of the security name means it is a Specified Investment Product (SIP).

Remark

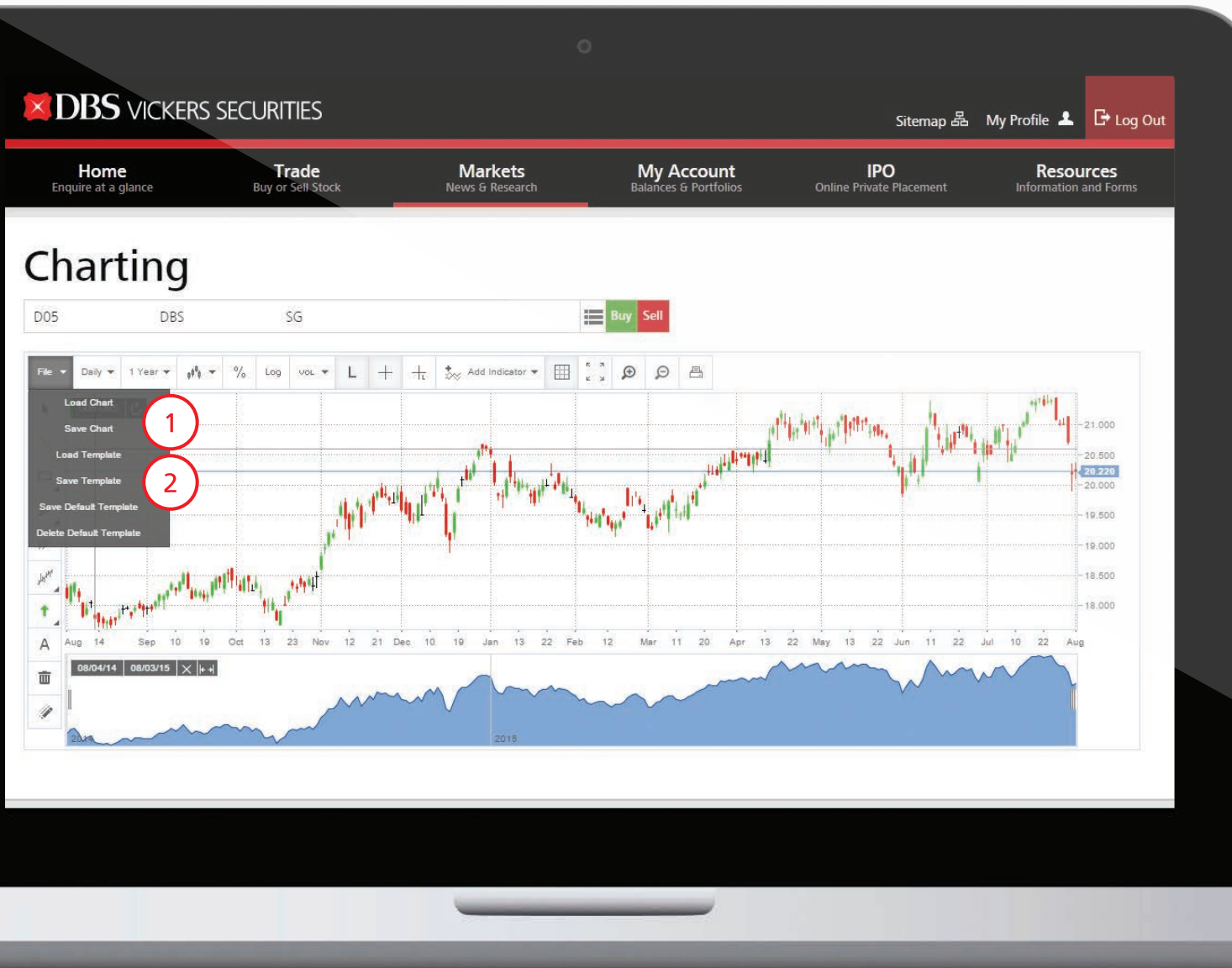
SUS = Trading Suspension, TH = Trading Halt, PL = Pending Listing, WI = When Issue, BI = Buy In Only, SDL = Delisted, CB = Cum Bonus, XB = Ex Bonus, CD = Cum Dividend, XD = Ex Dividend, CI = Cum Interest, XI = Ex Interest, CR = Cum Rights, XR = Ex Rights, CE = Cum Entitlement, J = Adjustment, PXD = Prior Ex Dividend, CCV = Cum Right of Conversion, XCV = Ex Right of Conversion, CPR = Cum Premium Return, XPR = Ex Premium Return, NXI = New Ex Interest, CW = Cum Warrants XW = Ex Warrants, XE = Ex Entitlement, XCD = Ex Cash Dividend, XDR = Ex Dividend and Rights, XO = Ex Offer, XP = Ex Part Repayment, XS = Ex Settlement XSD = Ex Stock Dividend, XSS = Ex Stock Split, CSS = Cum Stock Split, CCR = Cum capital return, XCR = Ex capital return, CA = Cum All, CXE = Cum

- 1 Gives you the flexibility to Add/Remove Comparison Fields by selecting from a list of fundamental/technical criteria.
- 2 Move cursor to access smart functions or click on Buy Sell to place a trade.



Markets > Charting

- 1 Able to display daily, weekly or monthly charts for the past 5 years.
- 2 View chart options for customisation such as colour, chart styles etc.
- 3 Tools to add indicators / draw lines on chart. Edit the template to add up to 5 indicators. Choose between Line, Bar or Candlestick chart styles.
- 4 To zoom into a particular period, click and hold along that area of the chart.



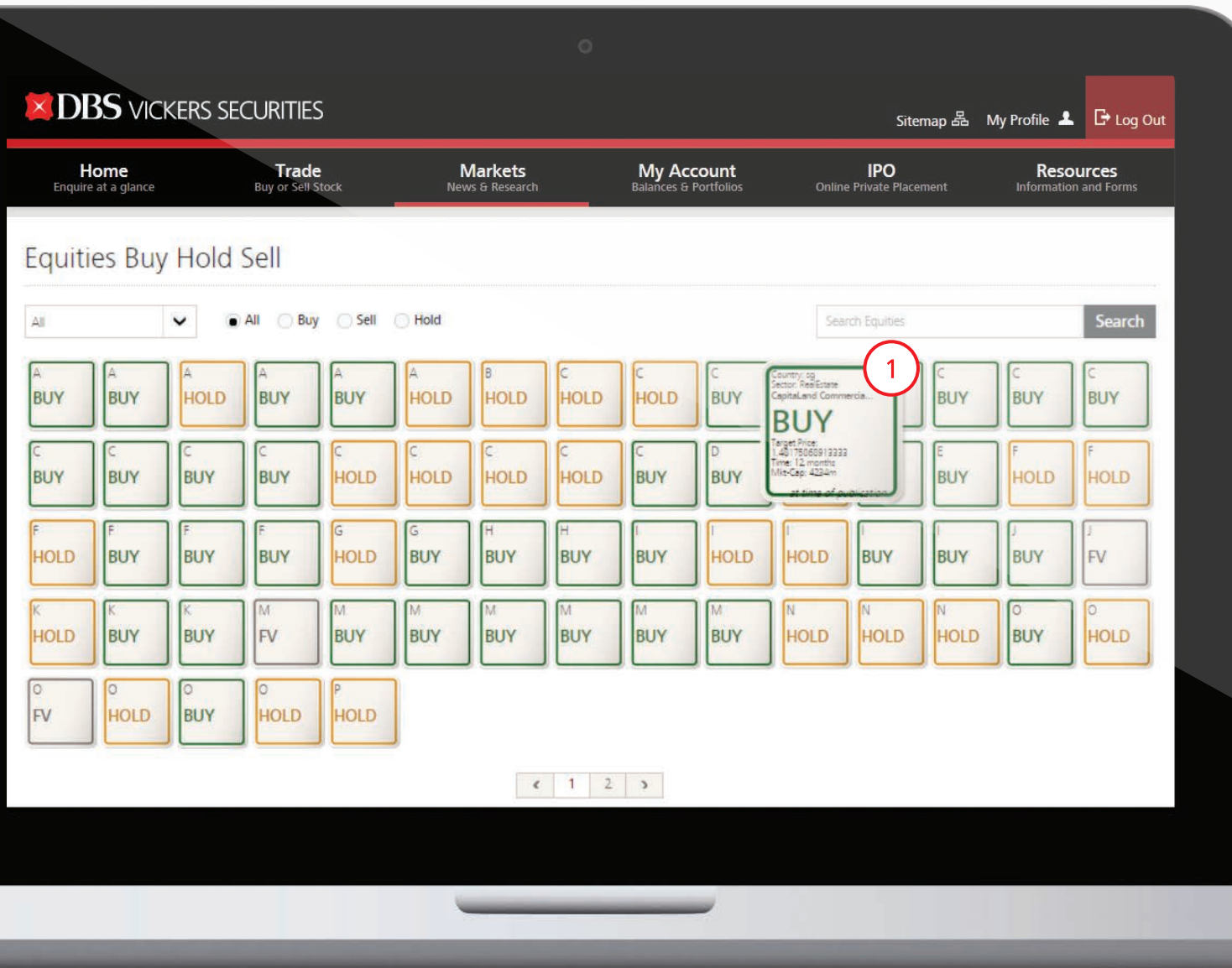
- 1 Save Chart – Save any indicators / settings / drawings applied to the chart. Limited to 5 charts.
- 2 Save Template – Save only the indicator settings applied to the chart. Limited to 5 templates.



Markets > Market Overview

- 1 View recommendations straight from DBS Group Research.

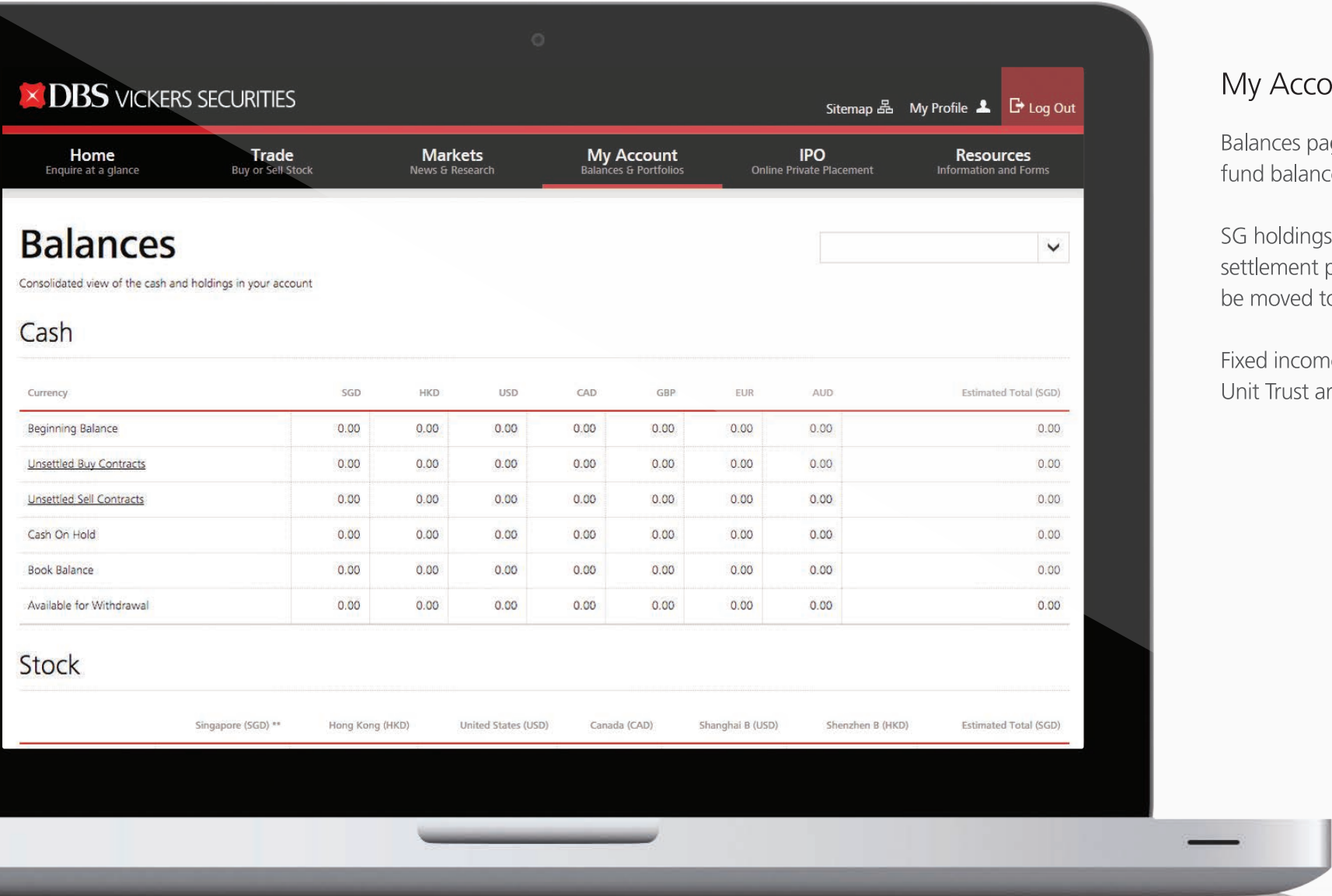
Move cursor over the blocks to bring up recommendation excerpts. Click on the block to access details of the recommendation and download the full report.



Balances page displays a current view of fund balances and holdings of an account.

SG holdings only appear for a contract's settlement period, thereafter holdings will be moved to individual's CDP.

Fixed income (foreign market) and Unit Trust are no longer available online.





My Account > Holdings

Display holdings of all markets: SG, HK, US, CA and UK

SG holdings will only be shown during pre-settled status. Once trade has been settled, SG holdings will disappear as they will be held in your Central Depository (CDP) account.

Holdings

Consolidated view of the holdings in your account.

Stock

Symbol	Instrument Name	Market	Quantity Net	Quantity Unsettled	Currency	Market Price	Net Mkt Value	Action
F10	F J BENJAMIN	Singapore	0.00	0.00	SGD	0.1190	0.00	Buy Sell
Total Net Mkt Value								
Total (SGD)							0.00	

Net Mkt Value of stock listed in Canadian market is based on 15-min delayed prices.

Unit Trust

There is no record to display.

Fixed Income

My Account >
Outstanding Contracts

Display outstanding contracts for all markets.

SG holdings will only be shown during pre-settled status. Once trade has been settled, SG holdings will disappear as they will be held in your Central Depository (CDP) account.

- 1 Add a transaction to Custom Portfolio by checking the box and selecting the portfolio to add to.

DBS VICKERS SECURITIES

Sitemap My Profile Log Out

Home Enquire at a glance
Trade Buy or Sell Stock
Markets News & Research
My Account Balances & Portfolios
IPO Online Private Placement
Resources Information and Forms

Outstanding Contracts

Displays details of trades awaiting settlement

Payments (Unsettled Buy Contracts)

Add to Portfolio	Reference No	SGX Contract No	Order Date	Trade Date	Settlement Date	Settlement Mode	Action	Symbol	Stock Name	Market	Quantity	Transaction Price	Settleme
<input type="checkbox"/>	DBSVS-2015-0654898	078911/001	22/06/2015	22/06/2015	25/06/2015	CASH	Buy	F10	FJ BENJAMIN	SG	100	SGD 0.120	SG

Select Portfolio SG Add Estimated Currency Total (SGD) (\$22,570)

Receipts (Unsettled Sell Contracts)

Add to Portfolio	Reference No	SGX Contract No	Order Date	Trade Date	Settlement Date	Settlement Mode	Action	Symbol	Stock Name	Market	Quantity	Transaction Price	Proceeds
<input type="checkbox"/>	DBSVS-2015-0654896	078909/501	22/06/2015	22/06/2015	25/06/2015	CASH	Sell	F10	FJ BENJAMIN	SG	100	SGD 0.110	SGD 0.430

- 1 Create up to 5 portfolios to monitor stock performance.
- 2 View portfolio from various dimensions, such as intra-day market data, performance or fundamental data of the company.
- 3 Click on Edit Portfolio to edit.
(refer to next slide for editing of portfolio)

Home
Enquire at a glanceTrade
Buy or Sell StockMarkets
News & ResearchMy Account
Balances & PortfoliosIPO
Online Private PlacementResources
Information and Forms

Custom Portfolios

Easy monitoring of portfolio performance with market prices

Performance Intraday Fundamentals

DJIA: 17,720.98 +192.71 NASDAQ: 5,107.94 +66.95 TSX: 13,245.75 -64.05 STI: 2,878.91 -9.31 HSI: 21,882.15 -117.47

Export To Excel Legend Edit Portfolio

Symbol	Stock Name	Action	Mkt	Qty	Avg Price	Original Value	Last	Mkt Value	Profit/Loss in SGD	Profit/Loss %	% of Portfolio
D05	DBS	Buy Sell	SG	1,000	16.000	16,000.000	SGD 16.680	16,680.000	680.000	4.25	90.02
G08	GP Batteries	Buy Sell	SG	2,000	0.810	1,620.000	SGD 0.925	1,850.000	230.000	14.20	9.98
				Total In SGD				18,530.000	910.000	5.16	100.00

Note

↑ ↓ Indicate direction change from the previous trade price.

"@ " symbol at the end of the security name means it is a Specified Investment Product (SIP).

Stock Code/Symbol Warning

Stock code and Symbols may be changed or updated by stock exchanges from time to time. There are potential trading risks associated with such changes, as there may be time lapses between the time of the receipt of updated information by feed vendors and the time such update information is received by us from the vendors. This may affect some display on our website and if you are in doubts, kindly contact our Investment Service Center at (852) 2902 3888 in Hong Kong or (65) 6327-2288 in Singapore or (66) 2657-7928 in Thailand.

DBS VICKERS SECURITIES

Sitemap My Profile Log Out

Home Enquire at a glance
Trade Buy or Sell Stock
Markets News & Research
My Account Balances & Portfolios
IPO Online Private Placement
Resources Information and Forms

Edit Custom Portfolio

1 My Portfolio 3

Edit Portfolio Name: My Portfolio 3
☐ Set as default Portfolio

Search stock to add to this Portfolio: Search by stockname or symbol

2

Amend Existing Entries

Clear All Entries

Stock Name	Symbol	Exchange	Quantity	Average Price	Last Update (dd/mm/yyyy)	Delete [?]
DBS	D05	SG	History 2000	16.000	02/12/2005	4
UOB	U11	SG	History 1000	14.000	02/12/2005	
OCBC Bank	O39	SG	History 5000	6.500	02/12/2005	
	T48	SG	History 2000	2.470	02/12/2005	

Cancel Save Changes 5

- 1 Choose which portfolio to edit.
- 2 Enter stock name / symbol to search.
- 3 You are only able to amend the quantity and average price.
- 4 Check on the box to delete a current holding.
- 5 Click **Save Changes** for the edits to take effect.



My Account > History

- 1 View up to the last 12 months of your Account Activity by specifying the period.
(Useful for tracking dividend payments)
- 2 View past orders, up to the last 12 months, from the Order History tab.
(E.g. executed orders, expired orders, etc)

DBS VICKERS SECURITIES

Sitemap My Profile Log Out

Home Enquire at a glance Trade Buy or Sell Stock Markets News & Research My Account Balances & Portfolios IPO Online Private Placement Resources Information and Forms

History

Review your account activity and performance

Account Activity Order History

To check your current orders, please go to [Order Status](#).

From Date 17/11/2015 Search

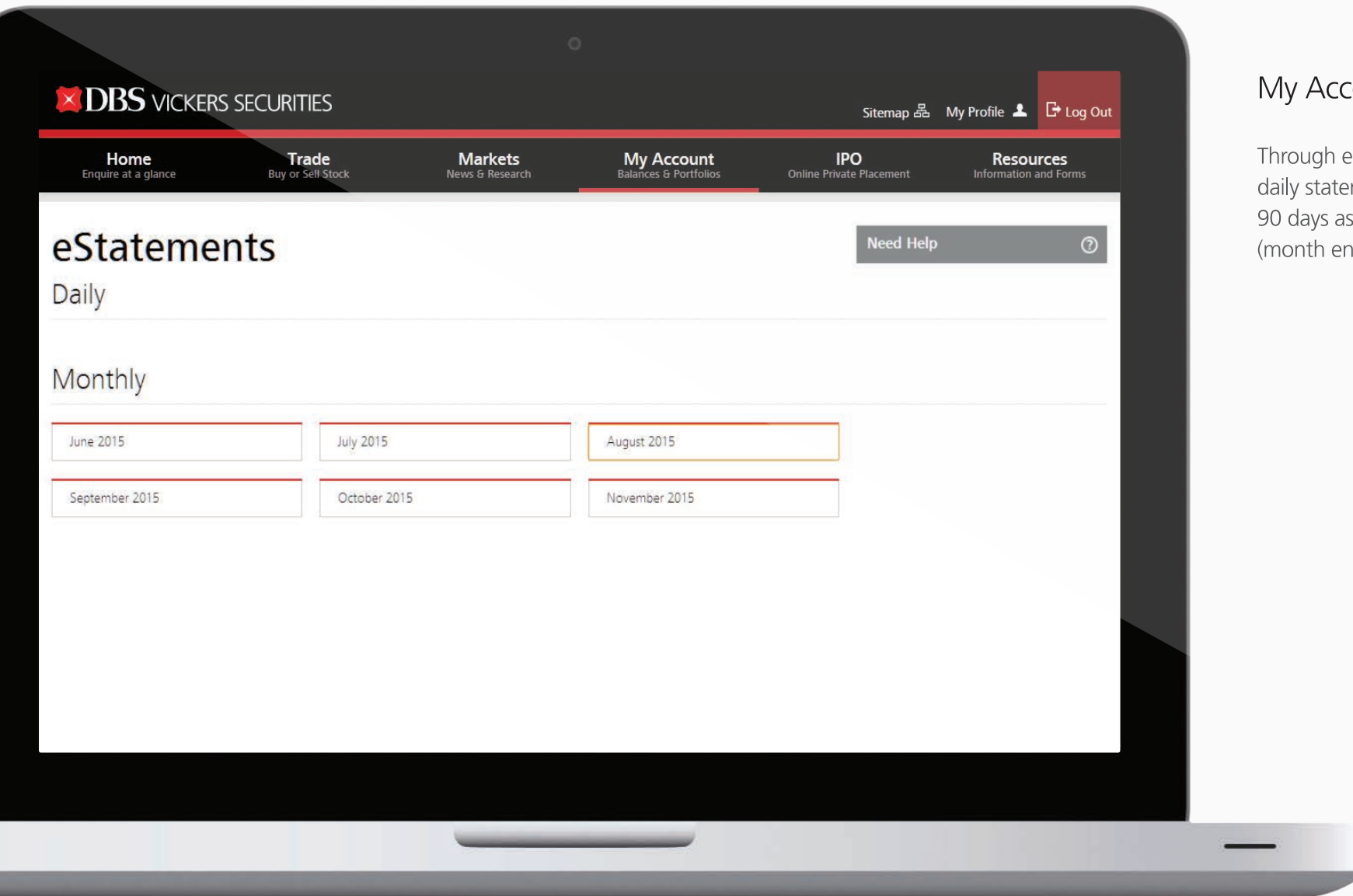
Last 7 Days Last 30 Days Last 60 Days Last 90 Days Export to Excel

Order Date/Time	Symbol	Stock Name/Transaction ID	Market	Action	Quantity	Price	Settlement Mode	Filled Quantity	Filled Price	Outstanding Quantity	Status
11/12/2015 11:42:15 AM	ES3	STI ETF 20151211000002243	SG	Buy	100	SGD 2.7200	Cash	0	SGD 0.0000	0	Cancelled
10/12/2015 10:08:20 AM	ES3	STI ETF 20151210000001683	SG	Buy	100	SGD 2.8000	Cash	0	SGD 0.0000	0	Cancelled
09/12/2015 05:20:28 PM	F10	F J BENJAMIN 20151209000003206	SG	Buy	100	SGD 0.0750	Cash	0	SGD 0.0000	0	Cancelled



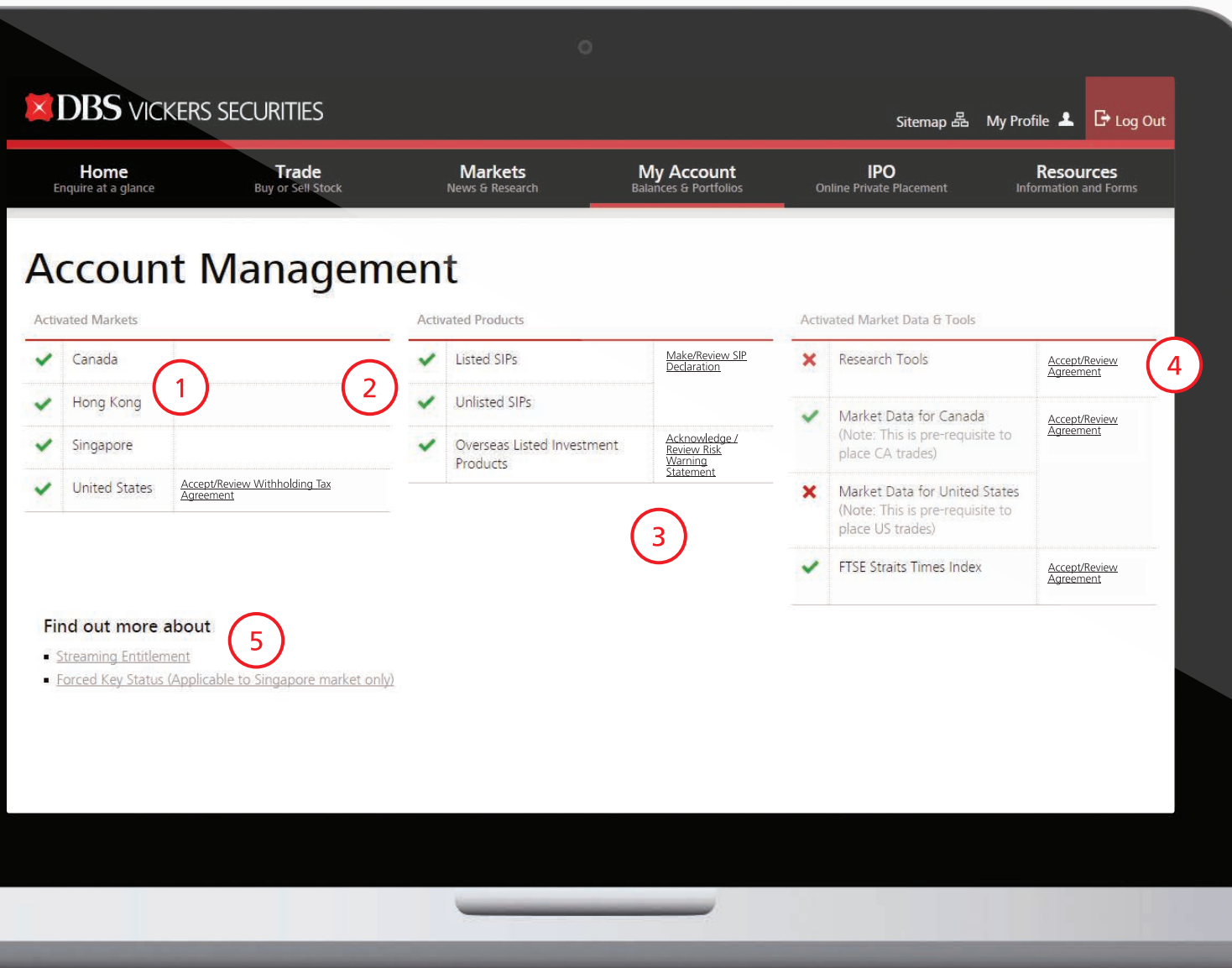
My Account > eStatements

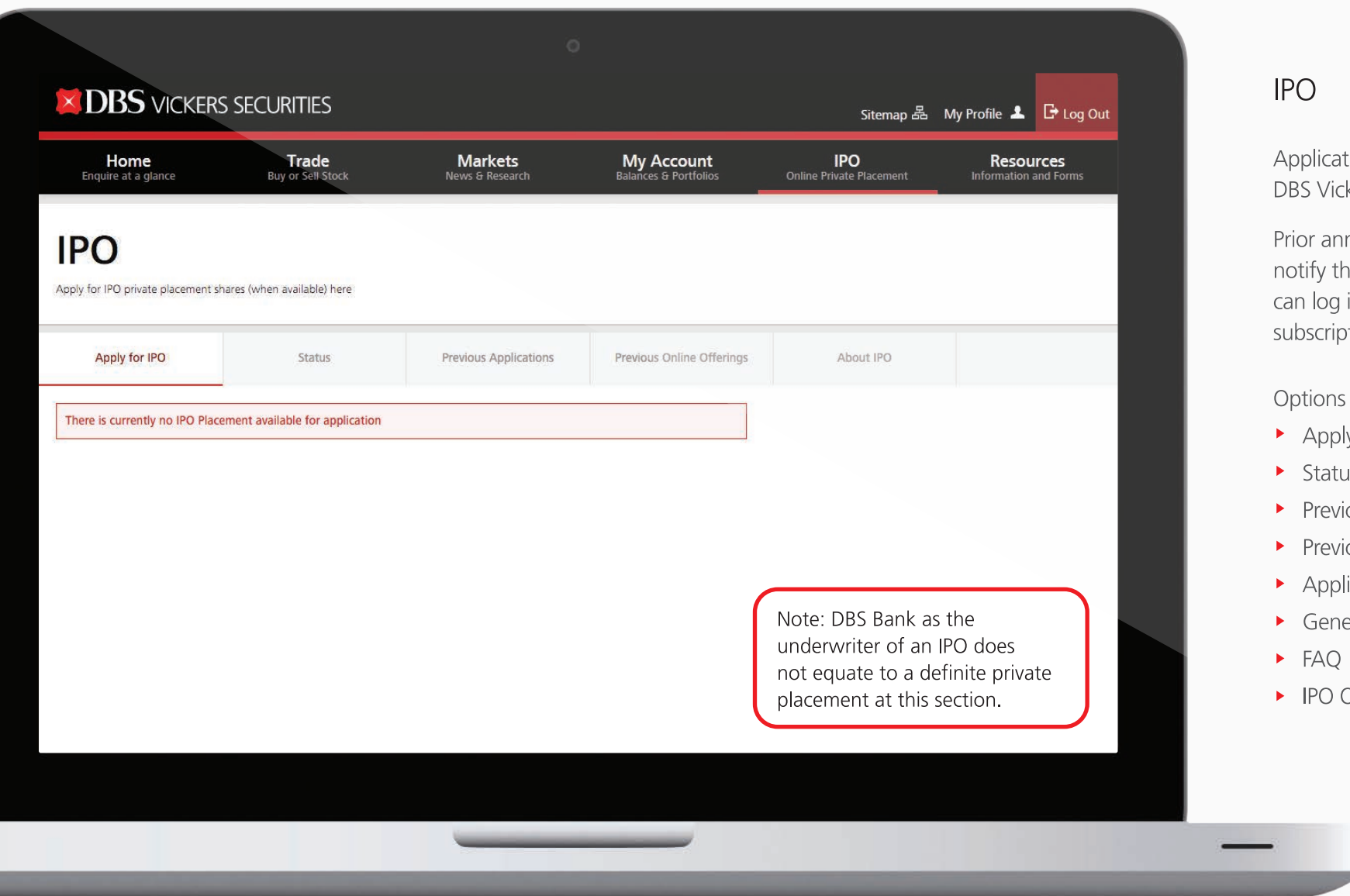
Through eStatements, you may view your daily statements (contract note) for the past 90 days as well as your monthly statements (month end) for the past 6 months.



My Account >
Account Management

- 1 Markets that are available for trading.
- 2 Declaration in Specified Investment Products (SIP) enables you to trade in more complex financial products.
- 3 Risk warning statement highlights the key risks involved when trading in Overseas Listed Investment Products. Acknowledge this section to enable you to trade in foreign markets.
- 4 Review and accept the agreements in order to use the market data and tools in DBS Vickers platform.
- 5 Check if you are entitled to any foreign market streaming.





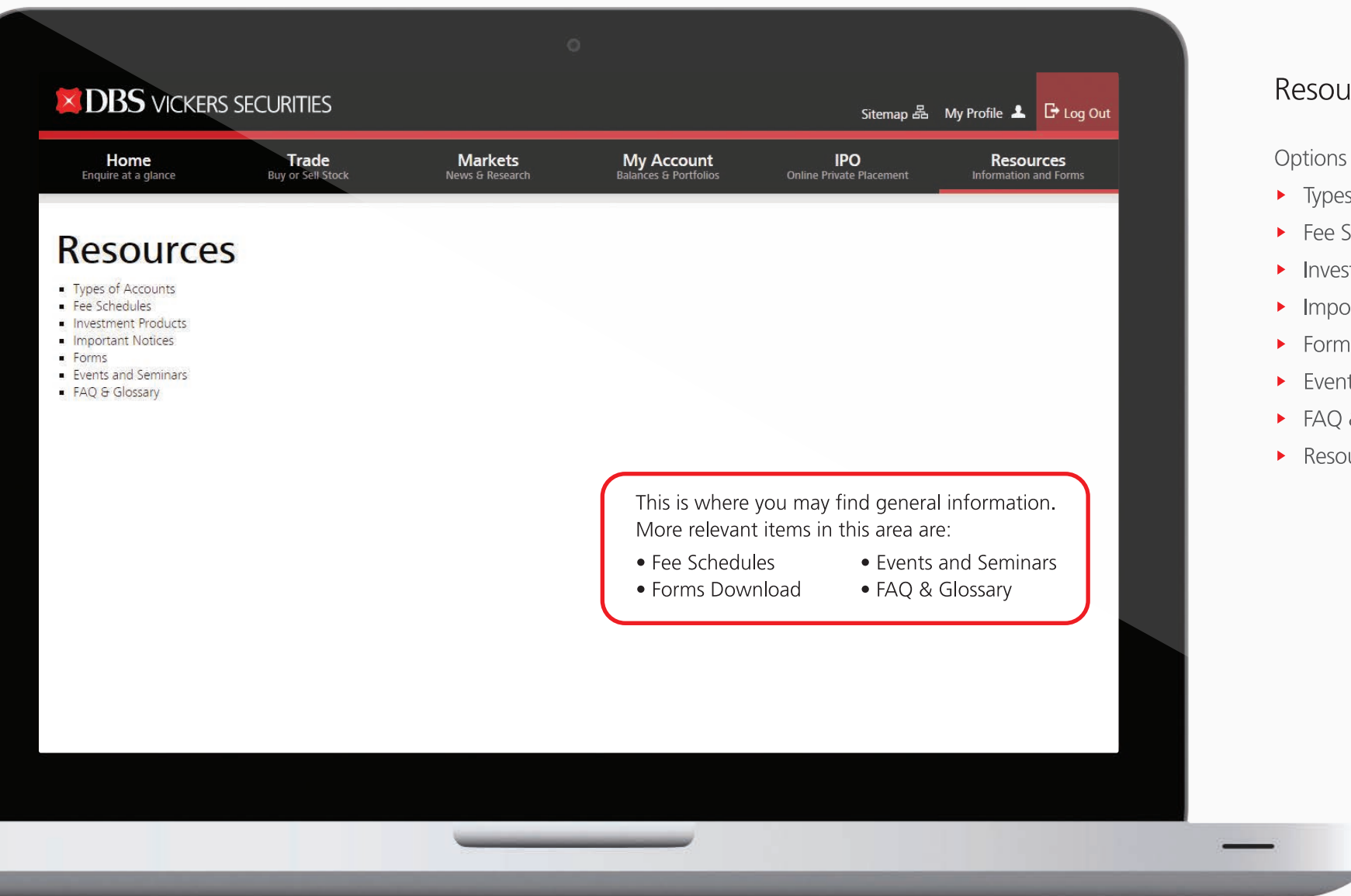
IPO > Overview

Application of private placement for DBS Vickers online customers.

Prior announcements will be made to notify the period that an account holder can log in and submit their interest for subscription of a Private Placement.

Options under IPO:

- ▶ Apply for IPO
- ▶ Status
- ▶ Previous Applications
- ▶ Previous Online Offerings
- ▶ Application Terms & Conditions
- ▶ General Terms & Conditions
- ▶ FAQ
- ▶ IPO Overview




Resources > Overview

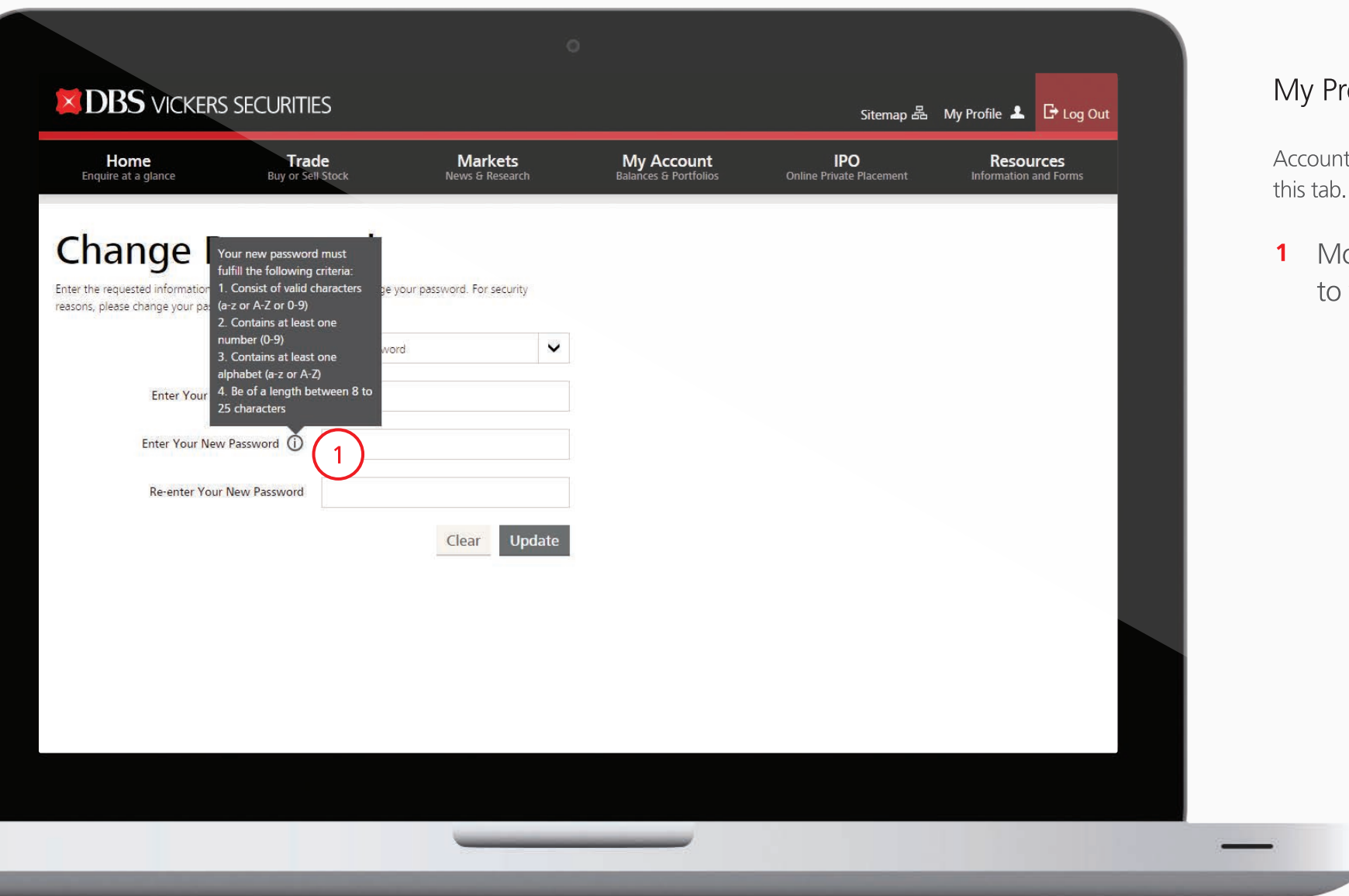
Options under Resources:

- ▶ Types of Accounts
- ▶ Fee Schedules
- ▶ Investment Products
- ▶ Important Notices
- ▶ Forms
- ▶ Events and Seminars
- ▶ FAQ & Glossary
- ▶ Resources Overview

My Profile > Change Password

Account preferences may be adjusted under this tab.

- 1 Move cursor over the sign  to view password criteria.



DBS VICKERS SECURITIES

Sitemap My Profile Log Out

Home Enquire at a glance
Trade Buy or Sell Stock
Markets News & Research
My Account Balances & Portfolios
IPO Online Private Placement
Resources Information and Forms


Change Password

Enter the requested information and confirm your new password. For security reasons, please change your password.

Your new password must fulfill the following criteria:

1. Consist of valid characters (a-z or A-Z or 0-9)
2. Contains at least one number (0-9)
3. Contains at least one alphabet (a-z or A-Z)
4. Be of a length between 8 to 25 characters

Current Password

Enter Your New Password  **1**

Re-enter Your New Password

My Profile >
Update Personal Details

To update your particulars, you will need to log in using your 2FA secure device.

Update your mobile number to enable log in using SMS OTP as well as to receive trade alerts.

For users who are using DBS iBanking 2FA device, you will also need to update your mobile number to receive SMS OTP.

- 1 For update of address, click on [Update Form](#) , print out the forms and return via post.

DBS VICKERS SECURITIES

Sitemap My Profile Log Out

Home Enquire at a glance
Trade Buy or Sell Stock
Markets News & Research
My Account Balances & Portfolios
IPO Online Private Placement
Resources Information and Forms

Update Personal Details

To change your mailing address, kindly do **1** [Update Form](#) and mail it back to us after you have completed it.

Mailing Address 12 Marina Boulevard #10-01
Marina Bay Financial Centre Tower 3
SGP

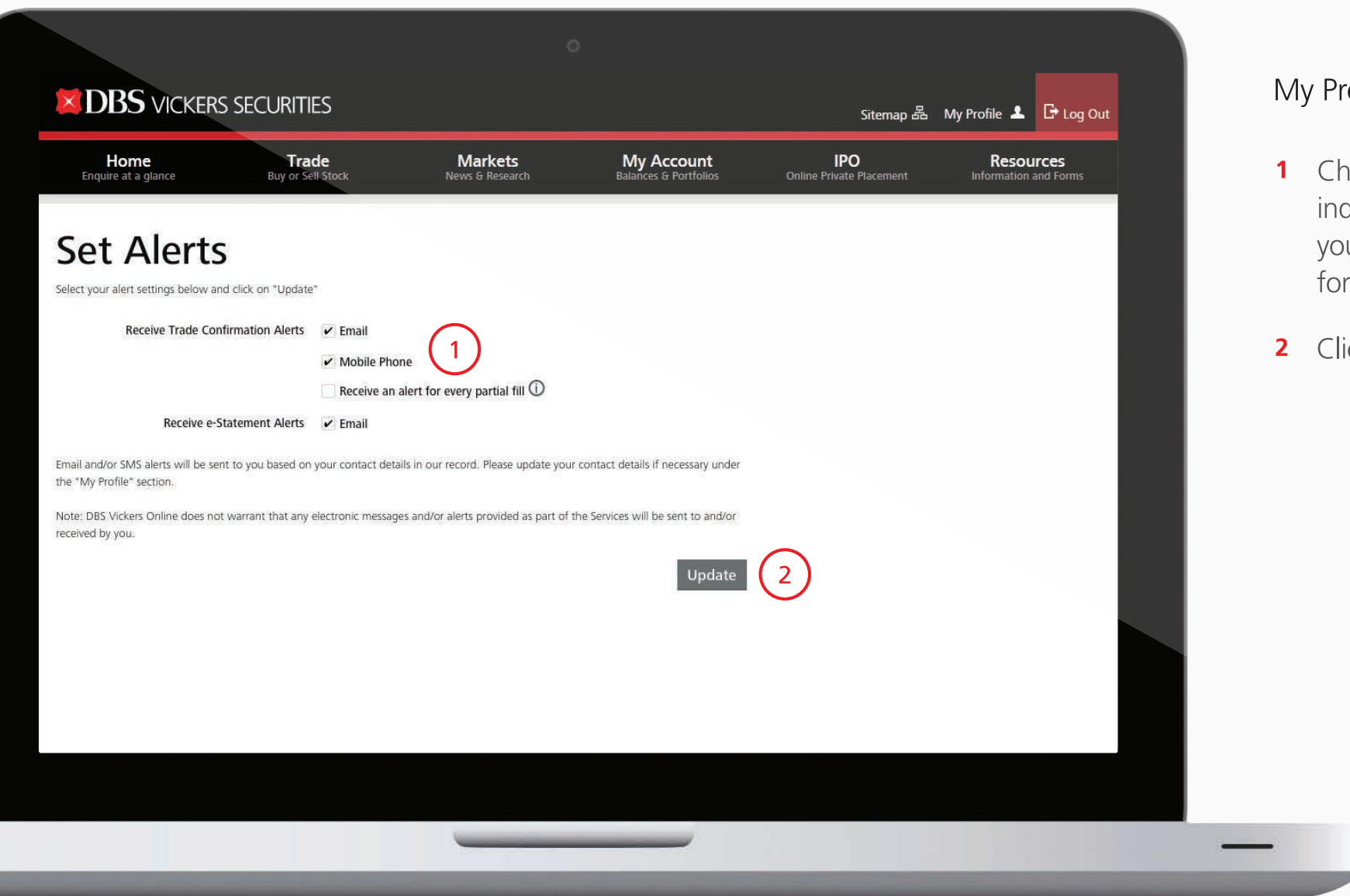
Home Number (Country Code/Area Code/Phone Number) 63987585

Office Number (Country Code/Area Code/Phone Number) 63272288

Mobile Number (Country Code/Mobile Number) 63272288

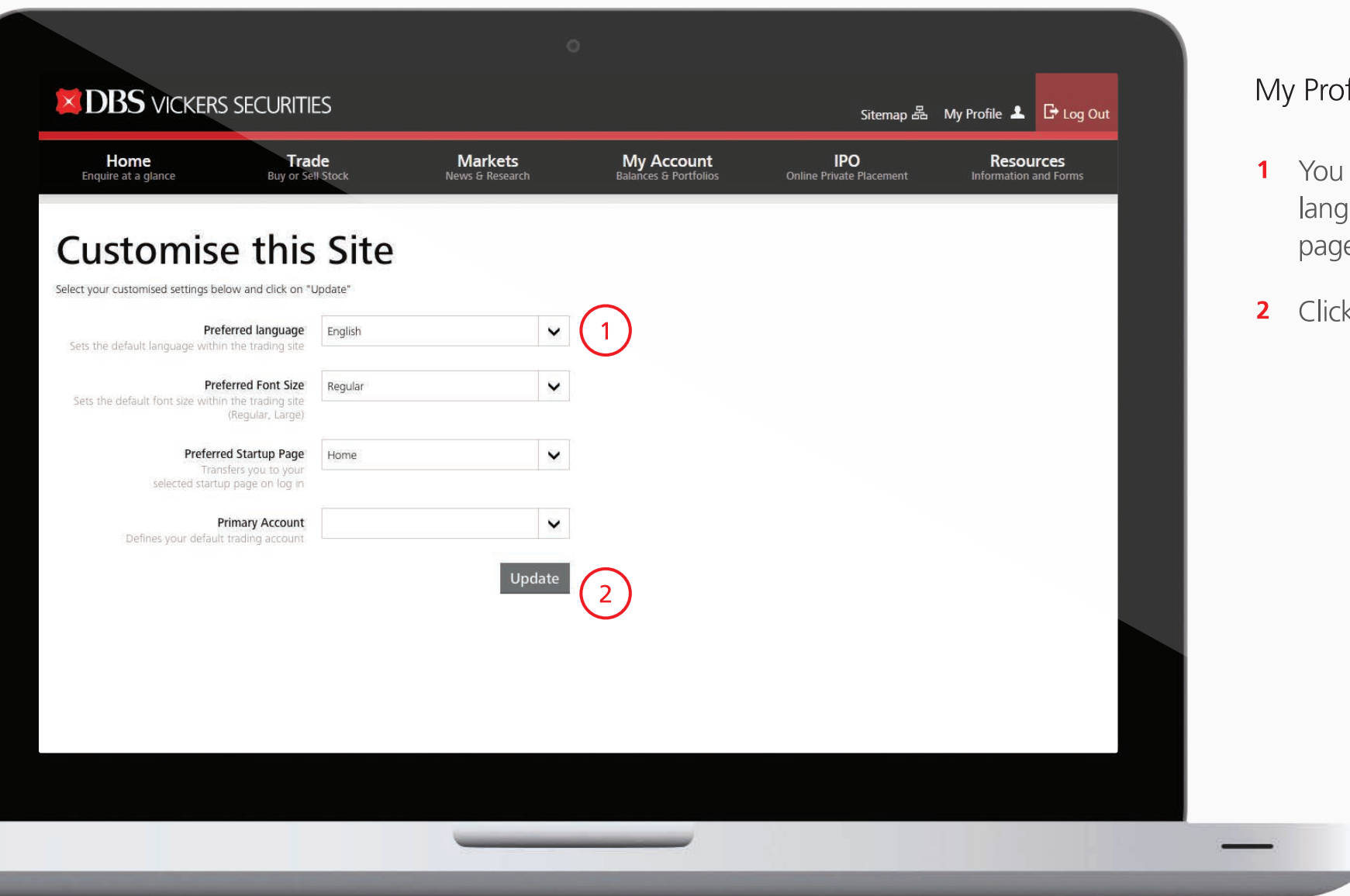
Email Address INFO@DBSVONLINE.COM

Clear Update



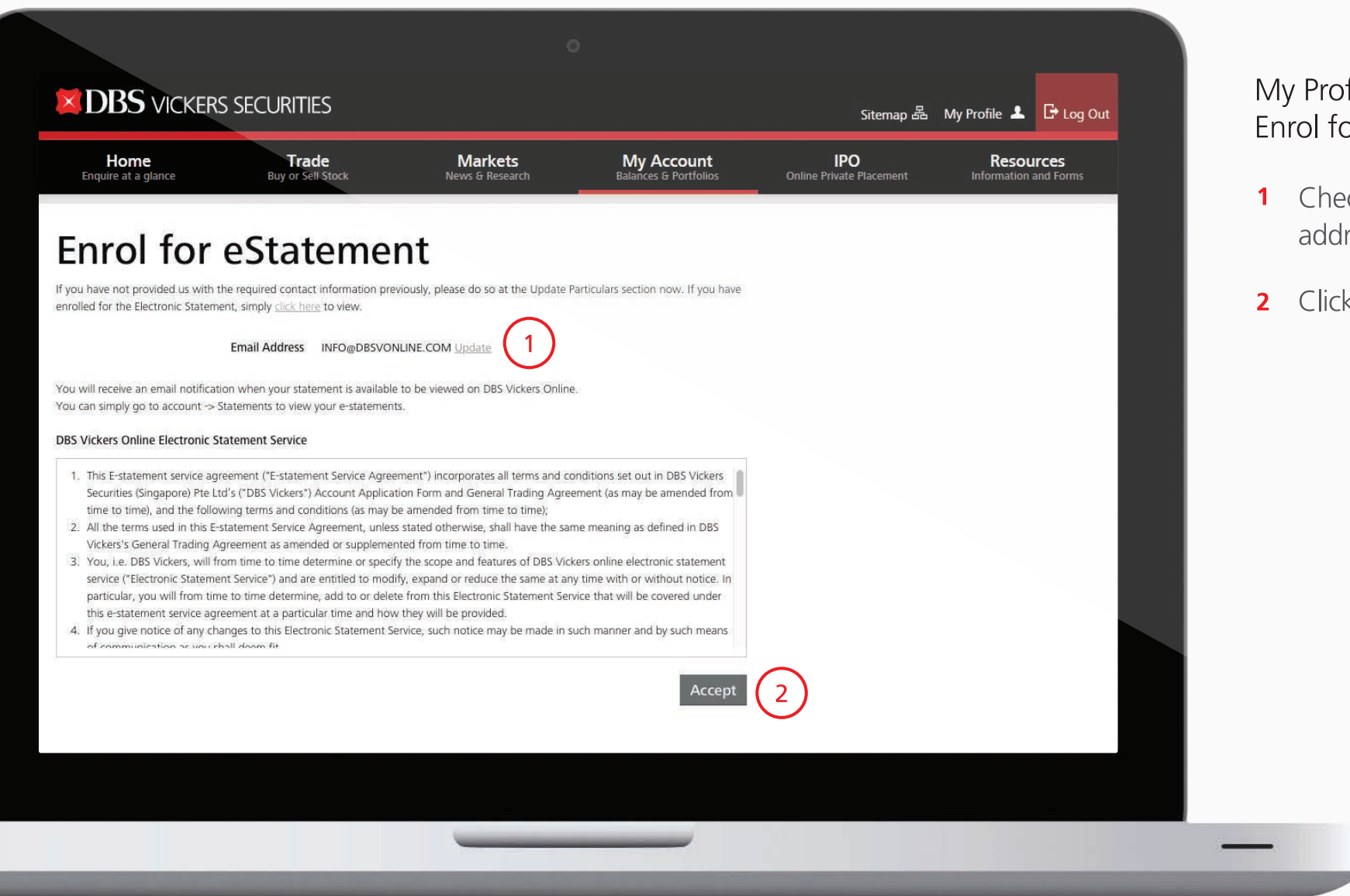
My Profile > Set Alerts

- 1 Check the box to indicate the channel(s) you wish to receive alerts for trade notification.
- 2 Click on **Update** to confirm.

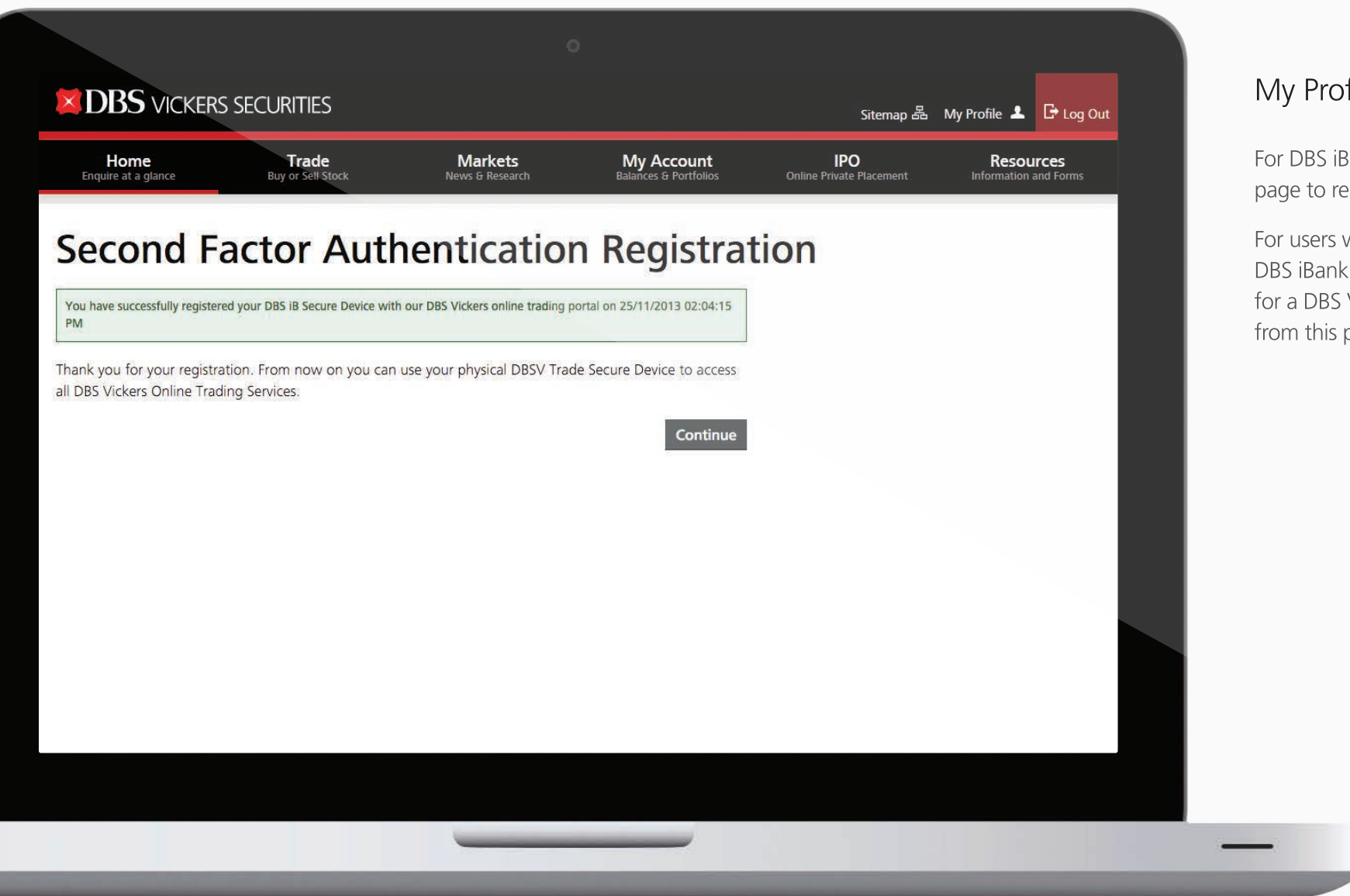


My Profile > Customise Site

- 1 You may choose your preferred language, font size, start up page and primary account.
- 2 Click on **Update** to confirm.

My Profile >
Enrol for eStatement

- 1 Check if your email address is correct.
- 2 Click on **Accept** to confirm.



My Profile > 2FA

For DBS iBanking users, proceed to this page to register your secure device.

For users who are not using DBS iBanking device, please request for a DBS Vickers secure device from this page.

“This information is published for general circulation only and does not have regard to the specific investment objectives, financial situation and the particular needs of any specific person. Investors should seek advice from a financial adviser regarding the suitability of the investment product, taking into account the specific investment objectives, financial situation or particular needs of each person in receipt of this document before making a commitment to purchase the investment product. In the event that the investor chooses not to do so, he/ she should consider carefully whether the product is suitable for him / her.

DBS Vickers Securities (Singapore) Pte Ltd accepts no liability whatsoever for any loss suffered howsoever caused arising from your participation in this programme.”



Thank you

For more information, please visit www.dbsvickers.com

